

1129 Series



W full effect wheel wheel diameter × wheel width 75 x 31mm

EAN

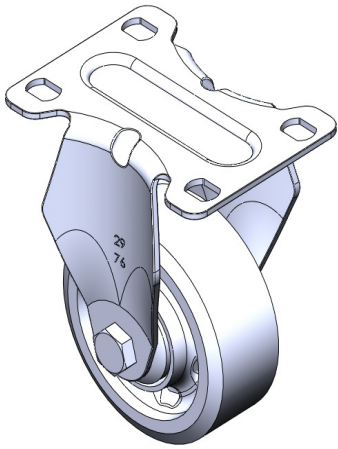
TW-4112903001010

YJ-X11290300451013

Fixed castors, one-piece stamped footrest - advanced holes
Galvanized surface, base plate installation
Reinforced impact-resistant polypropylene wheel core, thermoplastic elastomer (TPR) wheel tread
Dark grey, wheel bearings – precision ball.

Wheel surface: Thermoplastic rubber elastomer (TPR)
Wheel core: Made of high-quality impact-resistant polypropylene

Product descriptions are for reference only. The actual product shall prevail.



Picture may differ from original product

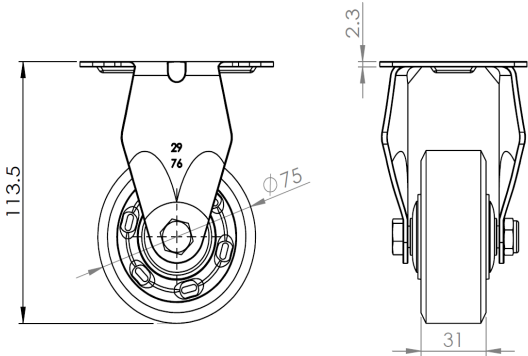
Technical Data

<input checked="" type="radio"/> Metric <input type="radio"/> Imperial	
Wheel Diameter	75mm
Wheel Width	31mm
Wheel Bearing	wheel equipped with ball bearings
Plate size	92 x 70mm
Base plate hole spacing	75 x 45mm
Plate hole	12 x 9mm
Overall height	113.5mm
Hardness of tread	72±5° Shore A
Load capacity (dynamic)	90kgs
Load capacity (static)	135kgs
Temperature	-20°C to +60°C
Stand Style	fixed
Stainless steel	N/A
Conductive	N/A
Anti	N/A
Weight	0.40kgs
Standard	ISO22883

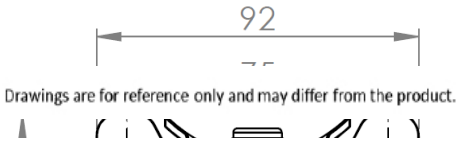
Advantages at a glance

Rolling Resistance	• • • • •
Operating Noise	• • • • •
Floor Surface Preservation	• • • • •

Dimensions



Mounting



* For any deviation between metric and imperial spec, please refer to the metric spec.

© All rights reserved 2025 Deshang Shanghaolun www.dersheng.com

