

1129 Series

PPR wheel wheel diameter × wheel width 75 x 31mm

EAN

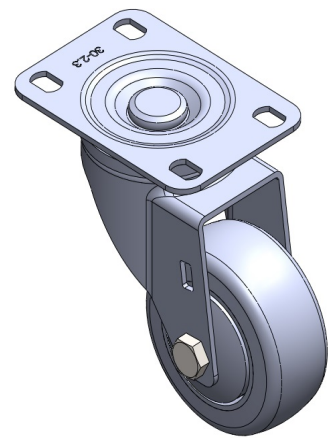
TW-4112903002001

YJ-X11290300262013

Movable casters, base plate riveted stamped feet - advanced holes  
Galvanized surface, base plate installation  
Impact-resistant polypropylene wheel core, thermoplastic elastomer (TPR) wheel tread  
Dark grey, wheel bearings – precision ball.

Wheel tread: Thermoplastic rubber elastomer (TPR)  
Wheel core: Made of high-quality impact-resistant polypropylene

Product descriptions are for reference only. The actual product shall prevail.



Picture may differ from original product

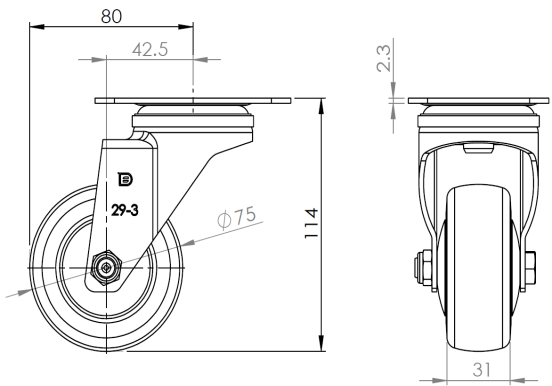
Technical Data

<input checked="" type="radio"/> Metric <input type="radio"/> Imperial	
Wheel Diameter	75mm
Wheel Width	31mm
Wheel Bearing	wheel equipped with ball bearings
Plate size	96 x 69mm
Base plate hole spacing	75 x 45mm
Plate hole	13 x 9mm
Offset	42.5mm
Swivel Interference	160mm
Overall height	114mm
Swivel Radius	80mm
Hardness of tread	82±5° Shore A
Load capacity (dynamic)	70kgs
Load capacity (static)	105kgs
Temperature	-20°C to +60°C
Stand Style	activity
Stainless steel	N/A
Conductive	N/A
Anti	N/A
Weight	0.60kgs
Standard	ISO22883

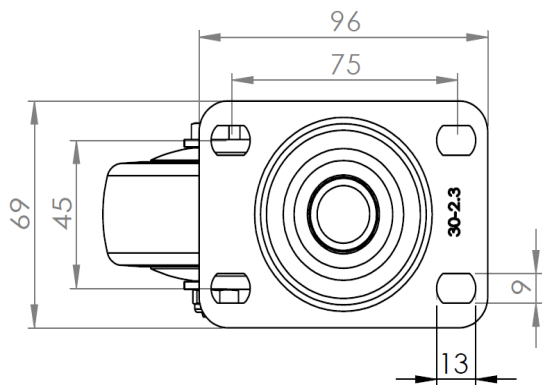
Advantages at a glance

Rolling Resistance	● ● ● ● ○
Operating Noise	● ● ● ● ○
Floor Surface Preservation	● ● ● ● ●

Dimensions



Mounting



Drawings are for reference only and may differ from the product.

\* For any deviation between metric and imperial spec, please refer to the metric spec.