



1129 Medical Caster Series

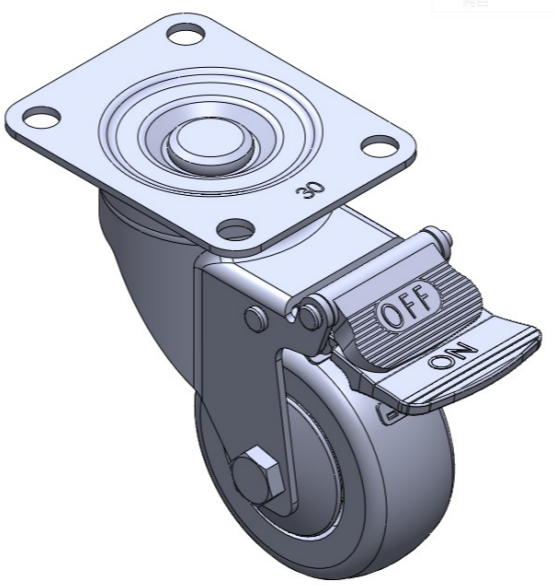
Resolute Wheel Diameter × Wheel Width 75 x 31mm

EAN  
TW-4112903004018

Casters with Total Brakes and a With locking system. Base plate Riveted and Stamping - instrument Fork. Hole Zine-Plated, Mounting Type - Top Plate. High-Quality Impact-Resistant Polypropylene Wheel Center, High-Quality Reinforced Polypropylene Rubber (TPR) Wheel Tread. Dark gray, Bearing - Ball Bearings.

Wheel tread: Thermoplastic rubber elastomer (TPR)  
Wheel Center: high-quality impact-resistant polypropylene

Drawings are for reference only and may differ from the product



Picture may differ from original product

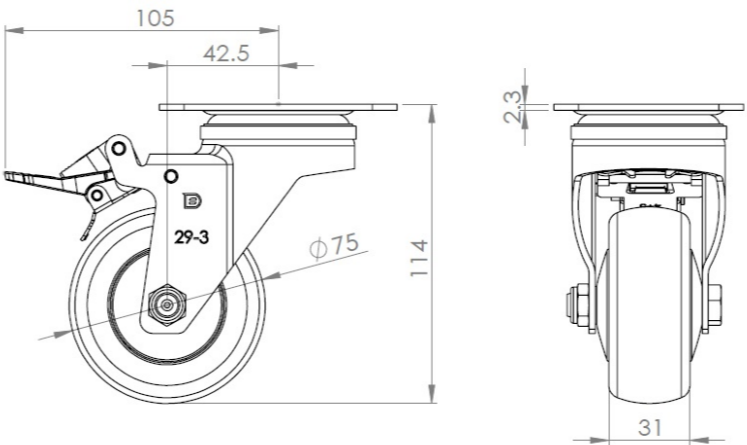
Technical Data

|  |                                |
|--|--------------------------------|
| <input checked="" type="radio"/> Metric <input type="radio"/> Imperial |                                |
| Wheel Diameter   | 75mm                           |
| Wheel Width  | 31mm                           |
| Wheel Bearing  | Wheels With Ball Bearings      |
| Plate Size   | 91 x 72.6mm                    |
| Bolt Hole Spacing  | 72 x 53mm                      |
| Plate Hole   | 10mm                           |
| Offset   | 42.5mm                         |
| Swivel Interference  | 210mm                          |
| Overall Height   | 114mm                          |
| Swivel Radius  | 105mm                          |
| Hardness Of Tread  | 72±5° Shore A                  |
| Load Capacity (Dynamic)  | 90kgs                          |
| Load Capacity (Static)   | 135kgs                         |
| Temperature  | -20°C to +60°C                 |
| Fork Type  | Swivel Caster With Total Brake |
| Stainless  | N/A                            |
| Electrical Conductivity  | N/A                            |
| Anti-Static  | N/A                            |
| Weight   | 0.65kgs                        |
| Standard   | ISO22883                       |

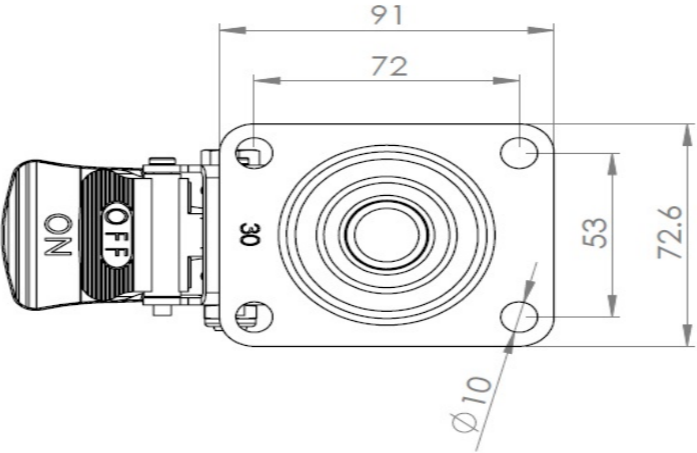
Advantages at a glance

|                            |           |
|----------------------------|-----------|
| Rolling Resistance         | ● ● ● ● ● |
| Operating Noise            | ● ● ● ● ● |
| Floor Surface Preservation | ● ● ● ● ● |

Dimensions



Mounting



\* For any deviation between metric and imperial spec, please refer to the metric spec.