



1129 Medical Caster Series

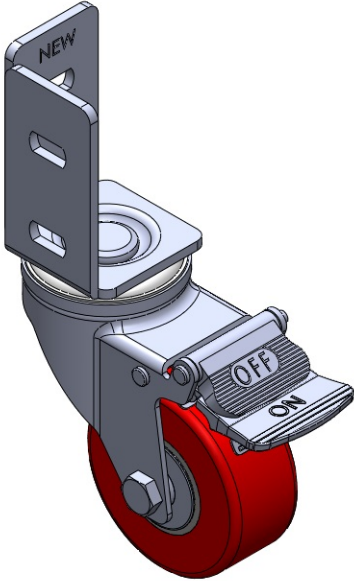
PU Wheel Diameter × Wheel Width 75 x 32mm

EAN  
TW-4112903004087

Casters with Total Brakes and a With locking system. Zine-Plated, angle iron Mounting Type - Top Plate. Cast Iron core, High Quality Polyurethane Wheel Tread. Red Cast Iron finish, Ball Bearings.

Wheel tread: Made of high-quality polyurethane  
Rim: Iron core / Cast iron core

Drawings are for reference only and may differ from the product



Picture may differ from original product

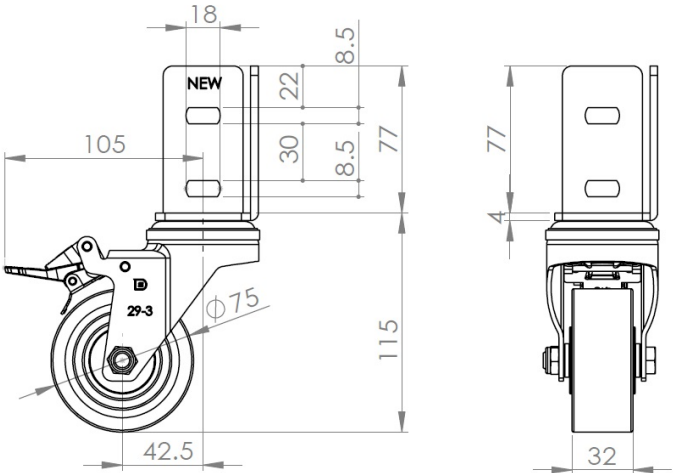
Technical Data

<input checked="" type="radio"/> Metric <input type="radio"/> Imperial	
Wheel Diameter	75mm
Wheel Width	32mm
Wheel Bearing	Wheels With Ball Bearings
Angle Bar Plate Size	53 x 53mm
Angle Bar Plate Specification	30mm
Angle Bar Plate Hole	18 x 8.5mm
Offset	42.5mm
Swivel Interference	210mm
Overall Height	114mm
Swivel Radius	105mm
Hardness Of Tread	93±5° Shore A
Load Capacity (Dynamic)	70kgs
Load Capacity (Static)	105kgs
Temperature	-30°C to +70°C
Fork Type	Swivel Caster With Total Brake
Stainless	N/A
Electrical Conductivity	N/A
Anti-Static	N/A
Weight	0.80kgs
Standard	ISO22883

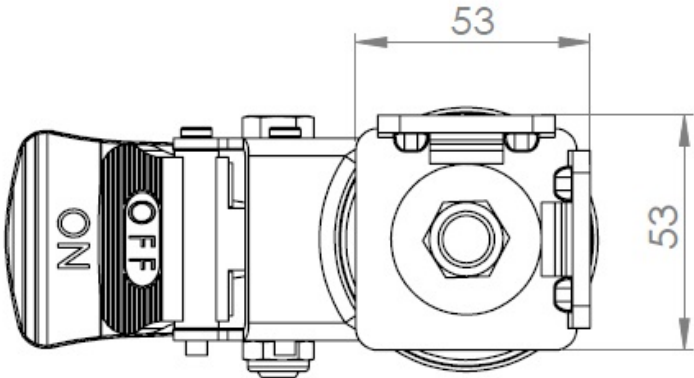
Advantages at a glance

Rolling Resistance	● ● ● ○ ○
Operating Noise	● ● ● ● ○
Floor Surface Preservation	● ● ● ● ○

Dimensions



Mounting



\* For any deviation between metric and imperial spec, please refer to the metric spec.