



1129 Medical Caster Series

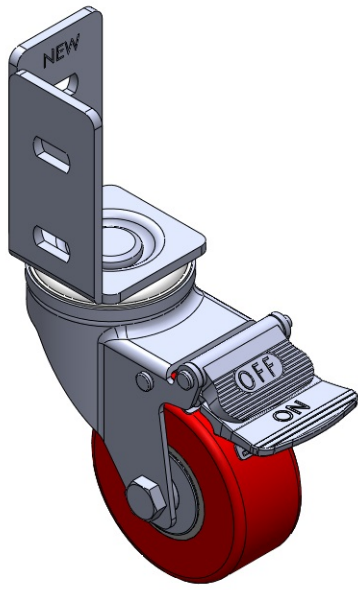
PU Wheel Diameter × Wheel Width 75 x 32mm

EAN  
TW-4112903004087

Casters with Total Brakes and a With locking system. Zine-Plated, angle iron Mounting Type - Top Plate. Cast Iron core, High Quality Polyurethane Wheel Tread. Red Cast Iron finish, Ball Bearings.

Wheel tread: Made of high-quality polyurethane  
Rim: Iron core / Cast iron core

Drawings are for reference only and may differ from the product



Picture may differ from original product

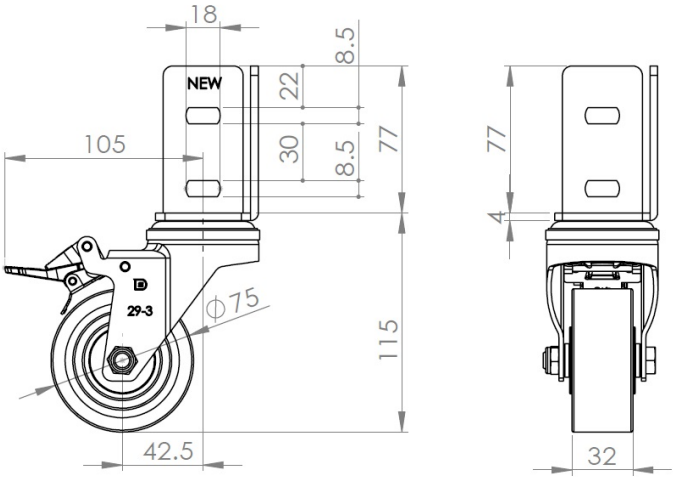
Technical Data

<input checked="" type="radio"/> Imperial <input type="radio"/> Metric	
Wheel Diameter	3 "
Wheel Width	1-5/16 "
Wheel Bearing	Wheels With Ball Bearings
Angle Bar Plate Size	2-1/8 " x 2-1/8 "
Angle Bar Plate Specification	1-3/16 "
Angle Bar Plate Hole	3/4 " x <div style=
Offset	2-3/16 "
Swivel Interference	8-3/8 "
Overall Height	4-1/2 "
Swivel Radius	4-3/16 "
Hardness Of Tread	93±5° Shore A
Load Capacity (Dynamic)	154lbs
Load Capacity (Static)	231lbs
Temperature	-22°F to +158°F
Fork Type	Swivel Caster With Total Brake
Stainless	N/A
Electrical Conductivity	N/A
Anti-Static	N/A
Weight	1.8lbs
Standard	ISO22883

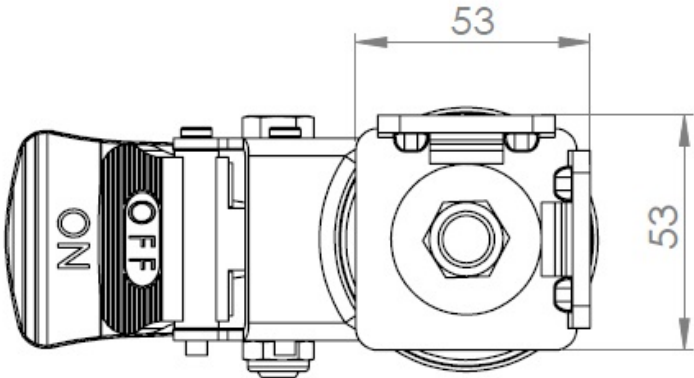
Advantages at a glance

Rolling Resistance	● ● ● ○ ○
Operating Noise	● ● ● ● ○
Floor Surface Preservation	● ● ● ● ○

Dimensions



Mounting



\* For any deviation between metric and imperial spec, please refer to the metric spec.