



1129 Medical Caster Series

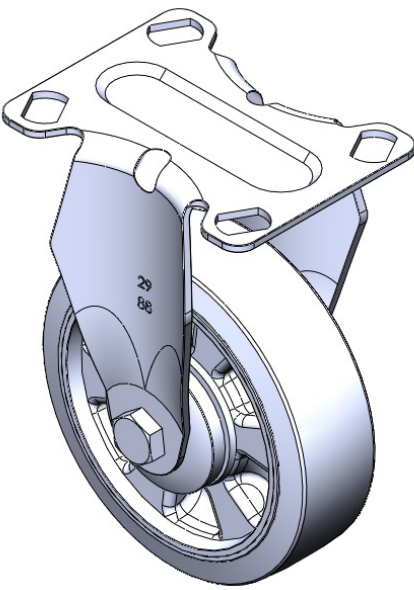
W Resolute Wheel Diameter × Wheel Width 100 x 31mm

EAN
TW-4112904001012

Rigid Caster with integrally molded Stamping bracket and angled hole. Chrome-Plated finish, Mounting Type - Top Plate. Reinforced, impact-resistant polypropylene core with High-Quality Reinforced Polypropylene Rubber (TPR) Wheel Tread. Dark gray, Ball Bearings.

Wheel tread: Thermoplastic rubber elastomer (TPR)
Wheel Center: Made of high-quality impact-resistant polypropylene

Drawings are for reference only and may differ from the product



Picture may differ from original product

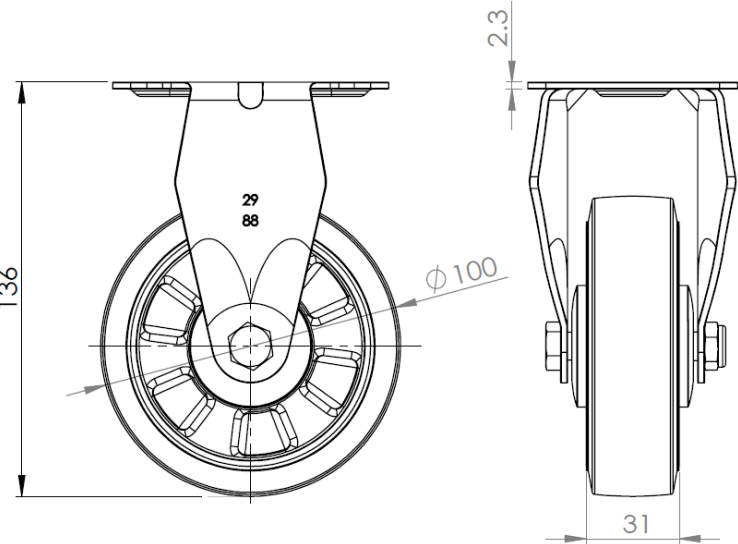
Technical Data

| | |
|------------------------------------------------------------------------|---------------------------|
| <input checked="" type="radio"/> Metric <input type="radio"/> Imperial | |
| Wheel Diameter | 100mm |
| Wheel Width | 31mm |
| Wheel Bearing | Wheels With Ball Bearings |
| Plate Size | 92 x 70mm |
| Bolt Hole Spacing | 74.5 x 49mm |
| Plate Hole | 15 x 10mm |
| Overall Height | 136mm |
| Hardness Of Tread | 72±5° Shore A |
| Load Capacity (Dynamic) | 125kgs |
| Load Capacity (Static) | 187.5kgs |
| Temperature | -20°C to +60°C |
| Fork Type | Rigid Caster |
| Stainless | N/A |
| Electrical Conductivity | N/A |
| Anti-Static | N/A |
| Weight | 0.45kgs |
| Standard | ISO22883 |

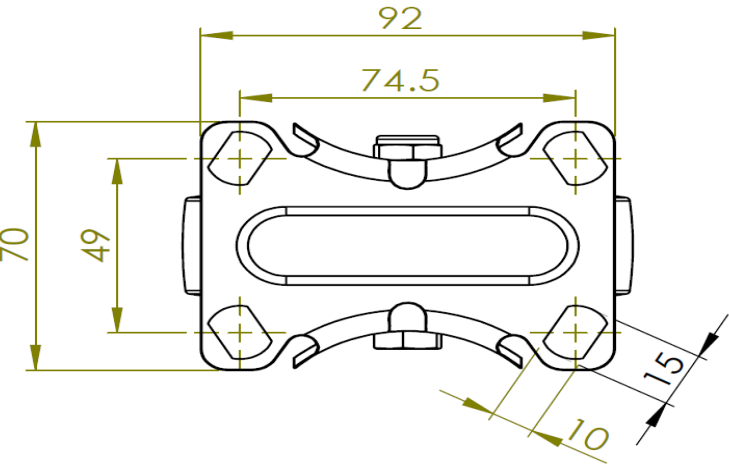
Advantages at a glance

| | |
|----------------------------|-----------|
| Rolling Resistance | ● ● ● ● ● |
| Operating Noise | ● ● ● ● ● |
| Floor Surface Preservation | ● ● ● ● ● |

Dimensions



Mounting



* For any deviation between metric and imperial spec, please refer to the metric spec.