



1129 Medical Caster Series

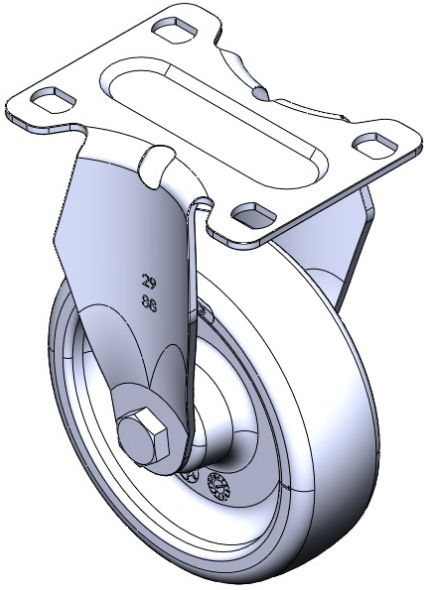
PP Wheel Diameter × Wheel Width 100 x 31mm

EAN  
TW-4112904001038

Rigid Caster with Stamping Fabricated Caster Fork and 75 x 45 mm (3" x 1-3/4") Bolt Hole Spacing.  
Zine-Plated, Mounting Type - Top Plate.  
Polypropylene Wheel Center and Wheel Tread.  
Black, Plain Bearing.

Wheel tread: PP polypropylene  
Wheel Center: PP polypropylene

Drawings are for reference only and may differ from the product



Picture may differ from original product

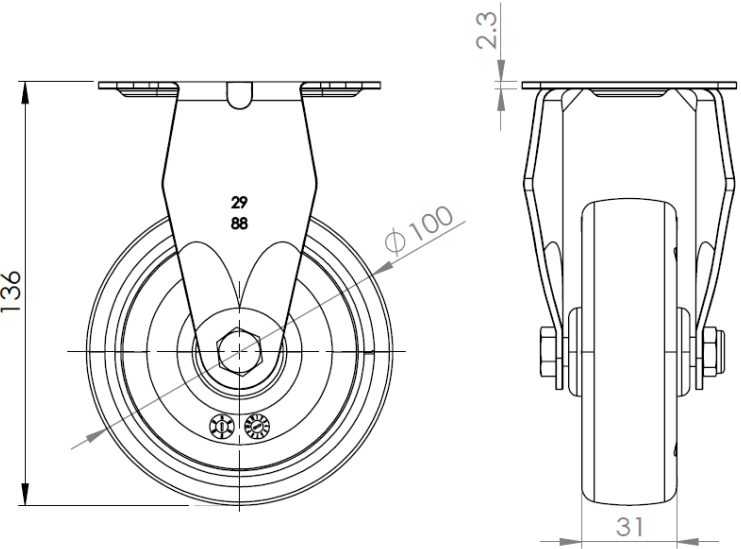
Technical Data

<input checked="" type="radio"/> Metric <input type="radio"/> Imperial	
Wheel Diameter	100mm
Wheel Width	31mm
Wheel Bearing	Wheel With Plain Bearing
Plate Size	92 x 70mm
Bolt Hole Spacing	75 x 45mm
Plate Hole	12 x 9mm
Overall Height	136mm
Hardness Of Tread	65±5° Shore D
Load Capacity (Dynamic)	90kgs
Load Capacity (Static)	135kgs
Temperature	-10°C to +60°C
Fork Type	Rigid Caster
Stainless	N/A
Electrical Conductivity	N/A
Anti-Static	N/A
Weight	0.45kgs
Standard	ISO22883

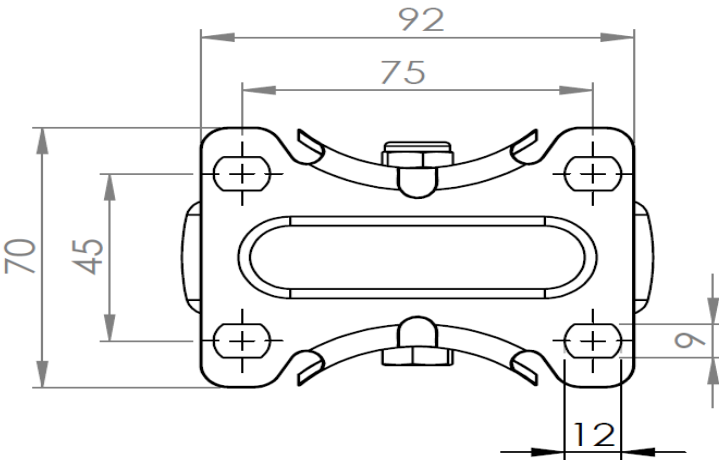
Advantages at a glance

Rolling Resistance	● ● ● ● ●
Operating Noise	● ● ● ○ ○
Floor Surface Preservation	● ● ● ○ ○

Dimensions



Mounting



\* For any deviation between metric and imperial spec, please refer to the metric spec.