

1129 Series



Classic PPR wheel wheel diameter × wheel width 100 x 31mm

EAN

TW-4112904002004

YJ-X11290400262013

Movable casters, base plate riveted stamped feet - advanced holes
Galvanized surface, base plate installation
Impact-resistant polypropylene wheel core, thermoplastic elastomer (TPR) wheel tread
Dark grey, wheel bearings – precision ball.

Wheel tread: Thermoplastic rubber elastomer (TPR)
Wheel core: high-quality impact-resistant polypropylene

Product descriptions are for reference only. The actual product shall prevail.



Picture may differ from original product

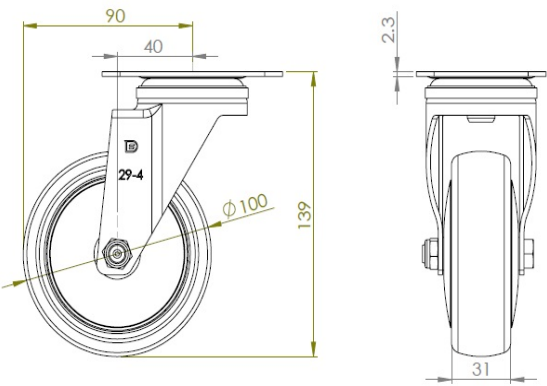
Technical Data

<input checked="" type="radio"/> Metric <input type="radio"/> Imperial	
Wheel Diameter	100mm
Wheel Width	31mm
Wheel Bearing	wheel equipped with ball bearings
Plate size	96 x 69mm
Base plate hole spacing	75 x 45mm
Plate hole	13 x 9mm
Offset	40mm
Swivel Interference	180mm
Overall height	139mm
Swivel Radius	90mm
Hardness of tread	82±5° Shore A
Load capacity (dynamic)	80kgs
Load capacity (static)	120kgs
Temperature	-20°C to +60°C
Stand Style	activity
Stainless steel	N/A
Conductive	N/A
Anti	N/A
Weight	0.65kgs
Standard	ISO22883

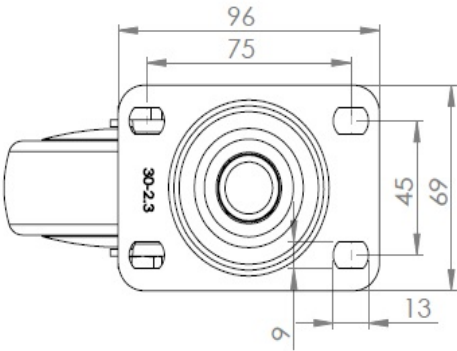
Advantages at a glance

Rolling Resistance	● ● ● ● ○
Operating Noise	● ● ● ● ○
Floor Surface Preservation	● ● ● ● ●

Dimensions



Mounting



Drawings are for reference only and may differ from the product.

* For any deviation between metric and imperial spec, please refer to the metric spec.