



1129 Medical Caster Series

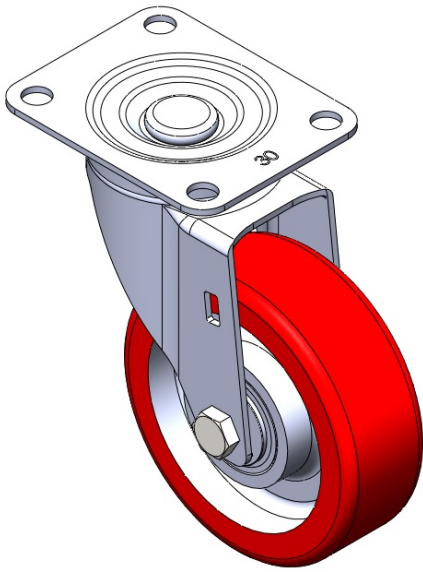
PU Wheel Diameter × Wheel Width 100 x 34mm

EAN
TW-4112904002052

Swivel Caster with Riveted, Stamping Fork and 72 x 53.5 mm (2-7/8" x 2-1/8") Bolt Hole Spacing.
Zine-Plated, Mounting Type - Top Plate.
Cast Iron core with High Quality Polyurethane Wheel Tread.
Red Cast Iron finish, Bearing with Ball Bearings.

Wheel tread: Made of high-quality polyurethane
Wheel Center: iron core/cast iron core

Drawings are for reference only and may differ from the product



Picture may differ from original product

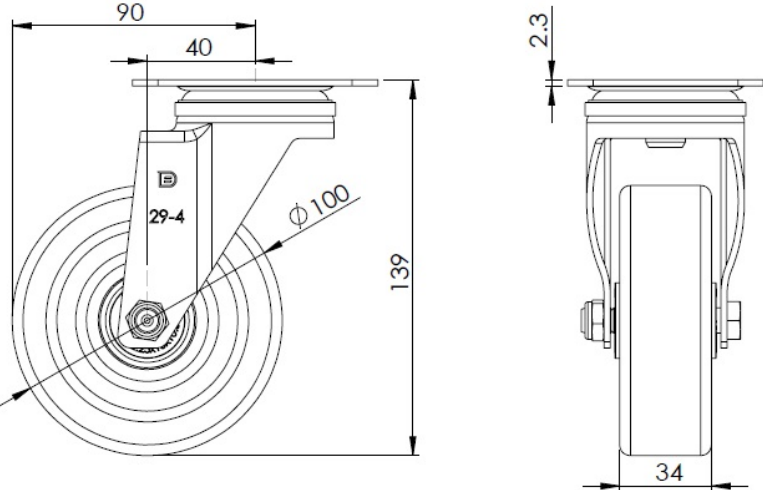
Technical Data

| | |
|--|---------------------------|
| <input checked="" type="radio"/> Metric <input type="radio"/> Imperial | |
| Wheel Diameter | 100mm |
| Wheel Width | 34mm |
| Wheel Bearing | Wheels With Ball Bearings |
| Plate Size | 91 x 72.6mm |
| Bolt Hole Spacing | 72 x 53mm |
| Plate Hole | 10mm |
| Offset | 40mm |
| Swivel Interference | 180mm |
| Overall Height | 139mm |
| Swivel Radius | 90mm |
| Hardness Of Tread | 93±5° Shore A |
| Load Capacity (Dynamic) | 320kgs |
| Load Capacity (Static) | 480kgs |
| Temperature | -20°C to +70°C |
| Fork Type | Swivel Caster |
| Stainless | N/A |
| Electrical Conductivity | N/A |
| Anti-Static | N/A |
| Weight | 0.65kgs |
| Standard | ISO22883 |

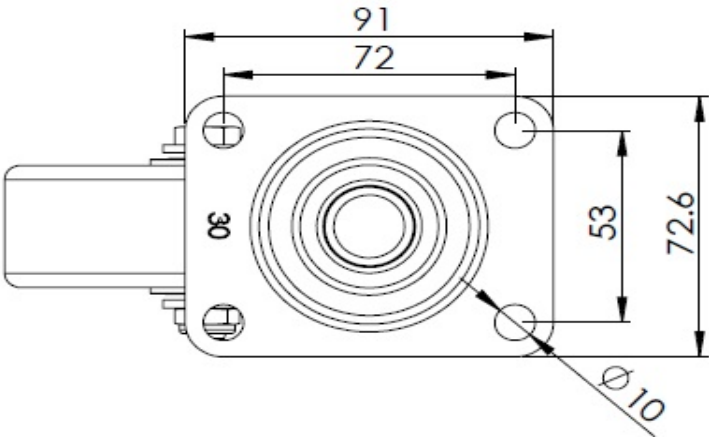
Advantages at a glance

| | |
|----------------------------|-----------|
| Rolling Resistance | ● ● ● ○ ○ |
| Operating Noise | ● ● ● ● ○ |
| Floor Surface Preservation | ● ● ● ● ○ |

Dimensions



Mounting



* For any deviation between metric and imperial spec, please refer to the metric spec.