



1129 Medical Caster Series

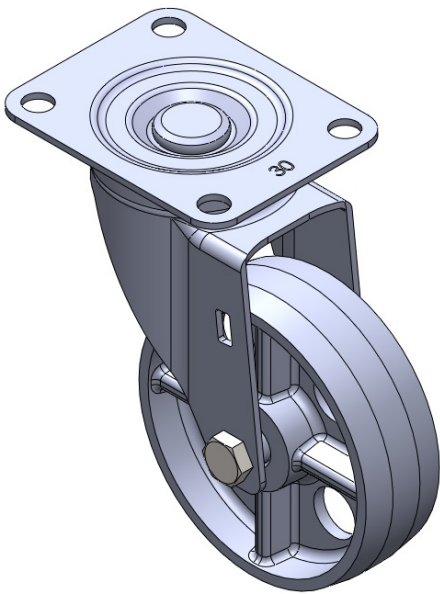
Cast Iron Wheel Diameter × Wheel Width 96 x 30mm

EAN
TW-4112904002055

Swivel Caster, Top Plate Riveted with Stamping Fork and 72 x 53.5 mm (2-7/8" x 2-1/8")
Bolt Hole Spacing
Zine-Plated, Mounting Type - Top Plate
Cast Iron Wheel Center and Wheel Tread
Black, wheel - Plain Bearing.

Wheel tread: cast iron
Wheel Center: cast iron

Drawings are for reference only and may differ from the product



Picture may differ from original product

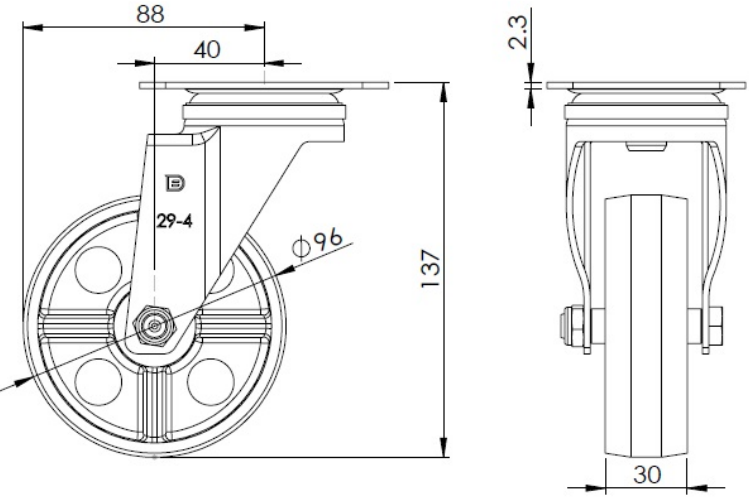
Technical Data

<input checked="" type="radio"/> Metric <input type="radio"/> Imperial	
Wheel Diameter	96mm
Wheel Width	30mm
Wheel Bearing	Wheel With Plain Bearing
Plate Size	91 x 72.6mm
Bolt Hole Spacing	72 x 53mm
Plate Hole	10mm
Offset	40mm
Swivel Interference	176mm
Overall Height	137mm
Swivel Radius	88mm
Load Capacity (Dynamic)	80kgs
Load Capacity (Static)	120kgs
Temperature	-20°C to +250°C
Fork Type	Swivel Caster
Stainless	N/A
Electrical Conductivity	N/A
Anti-Static	N/A
Weight	1.20kgs
Standard	ISO22883

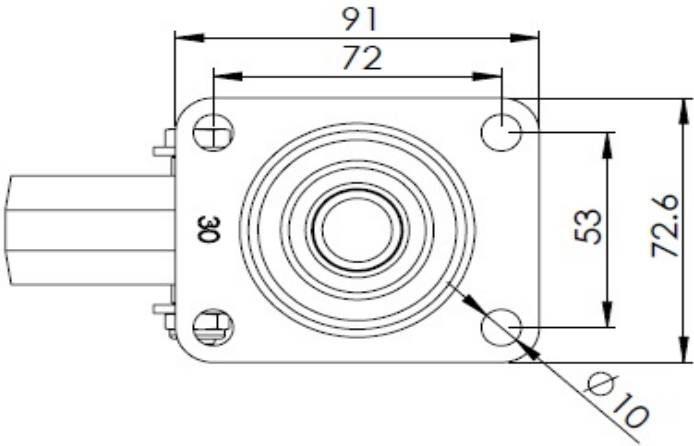
Advantages at a glance

Rolling Resistance	● ● ● ● ●
Operating Noise	● ○ ○ ○ ○
Floor Surface Preservation	● ○ ○ ○ ○

Dimensions



Mounting



* For any deviation between metric and imperial spec, please refer to the metric spec.