



1129 Medical Caster Series

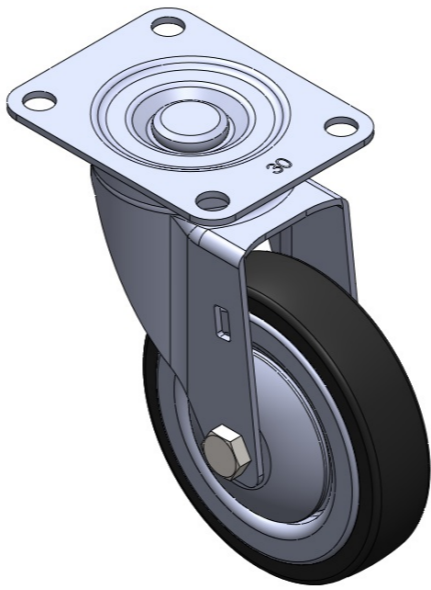
Wheel for institution equipments (black tire) Wheel Diameter × Wheel Width 100 x 23mm

EAN
TW-4112904002060

Swivel Caster, Top Plate with Riveted, Stamping Fork and 72 x 53.5 mm (2-7/8" x 2-1/8") Bolt Hole Spacing.
Zine-Plated, Mounting Type - Top Plate, with metal cover.
High-Quality Impact-Resistant Polypropylene Wheel Center with High-Quality Reinforced Polypropylene Rubber (TPR) Wheel Tread.
Black, Plain Bearing.

Wheel tread: Thermoplastic rubber elastomer (TPR)
Wheel Center: Made of high-quality impact-resistant polypropylene

Drawings are for reference only and may differ from the product



Picture may differ from original product

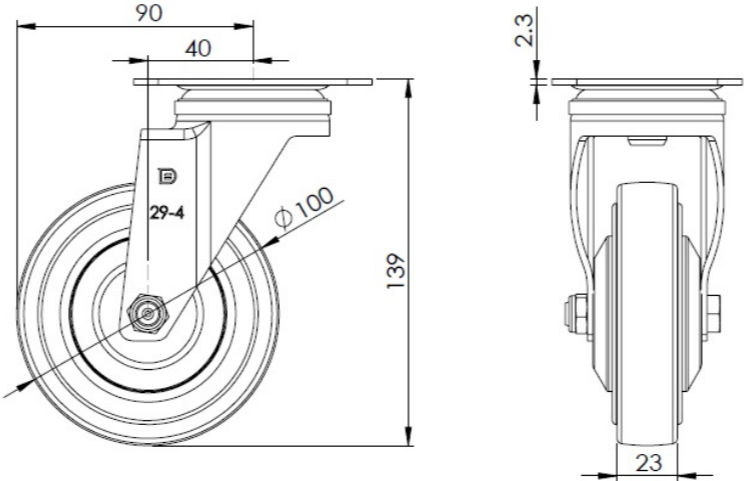
Technical Data

<input checked="" type="radio"/> Metric <input type="radio"/> Imperial	
Wheel Diameter	100mm
Wheel Width	23mm
Wheel Bearing	Wheel With Plain Bearing
Plate Size	91 x 72.6mm
Bolt Hole Spacing	72 x 53mm
Plate Hole	10mm
Offset	40mm
Swivel Interference	180mm
Overall Height	139mm
Swivel Radius	90mm
Hardness Of Tread	82±5° Shore A
Load Capacity (Dynamic)	80kgs
Load Capacity (Static)	120kgs
Temperature	-20°C to +60°C
Fork Type	Swivel Caster
Stainless	N/A
Electrical Conductivity	N/A
Anti-Static	N/A
Weight	0.65kgs
Standard	ISO22883

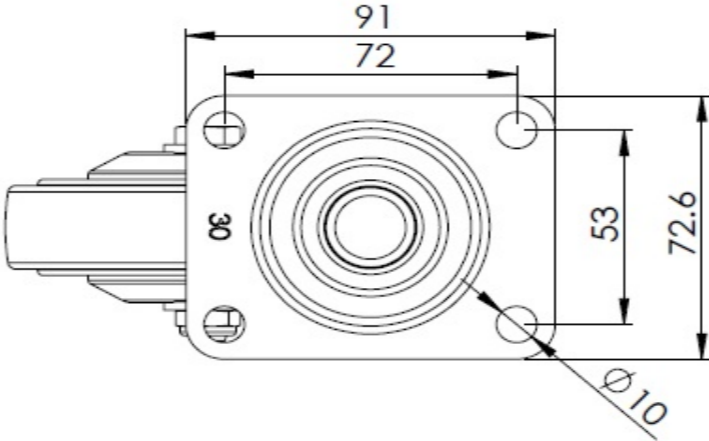
Advantages at a glance

Rolling Resistance	● ● ● ○ ○
Operating Noise	● ● ● ○ ○
Floor Surface Preservation	● ● ● ● ○

Dimensions



Mounting



* For any deviation between metric and imperial spec, please refer to the metric spec.