



1129 Medical Caster Series

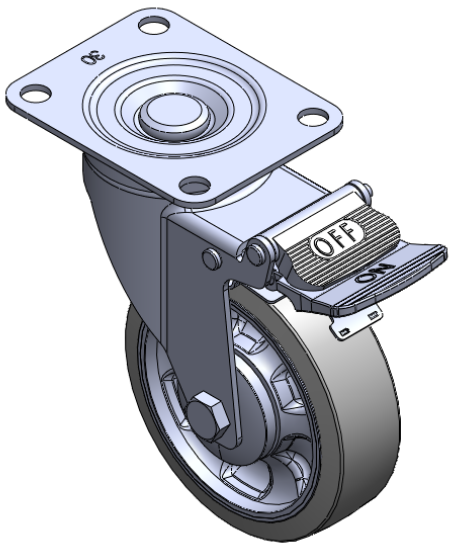
W Resolute Wheel Diameter × Wheel Width 100 x 31mm

EAN  
TW-4112904004024

Casters with Total Brakes and a With locking system. Top Plate Riveted and Stamping - instrument Fork. Hole Zine-Plated, Mounting Type - Top Plate. Reinforced, impact-resistant polypropylene Wheel Center with High-Quality Reinforced Polypropylene Rubber (TPR) Wheel Tread. Dark gray, Bearing - Ball Bearings.

Wheel tread: Thermoplastic rubber elastomer (TPR)  
Wheel Center: high-quality impact-resistant polypropylene

Drawings are for reference only and may differ from the product



Picture may differ from original product

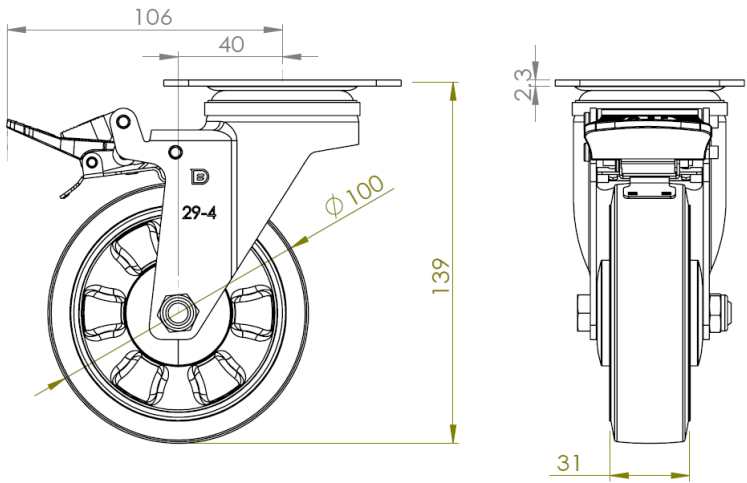
Technical Data

<input checked="" type="radio"/> Metric <input type="radio"/> Imperial	
Wheel Diameter	100mm
Wheel Width	31mm
Wheel Bearing	Wheels With Ball Bearings
Plate Size	91 x 72.6mm
Bolt Hole Spacing	72 x 53mm
Plate Hole	10mm
Offset	40mm
Swivel Interference	212mm
Overall Height	139mm
Swivel Radius	106mm
Hardness Of Tread	72±5° Shore A
Load Capacity (Dynamic)	125kgs
Load Capacity (Static)	187.5kgs
Temperature	-20°C to +60°C
Fork Type	Swivel Caster With Total Brake
Stainless	N/A
Electrical Conductivity	N/A
Anti-Static	N/A
Weight	0.70kgs
Standard	ISO22883

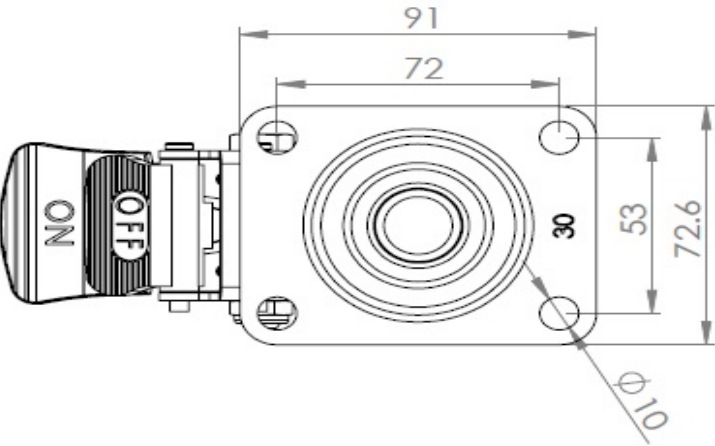
Advantages at a glance

Rolling Resistance	● ● ● ● ●
Operating Noise	● ● ● ● ●
Floor Surface Preservation	● ● ● ● ●

Dimensions



Mounting



\* For any deviation between metric and imperial spec, please refer to the metric spec.