

1129 Series



W full effect wheel wheel diameter × wheel width 100 x 31mm

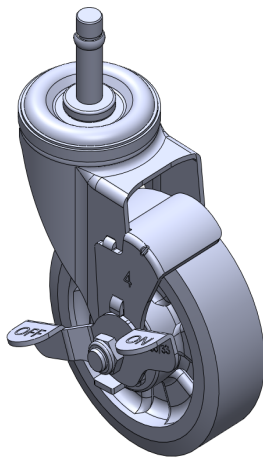
EAN

TW-4112904004063

Castors with side brakes and locking system. Riveted stamped tripod – Ø11x38L
Surface plating, plug-in mounting device, with brass buckle
Reinforced impact-resistant polypropylene wheel core, thermoplastic elastomer (TPR) wheel tread
Dark grey, wheel bearing – precision ball.

Wheel tread: Thermoplastic rubber elastomer (TPR)
Wheel core: High-quality impact-resistant polypropylene

Product descriptions are for reference only. The actual product shall prevail.



Picture may differ from original product

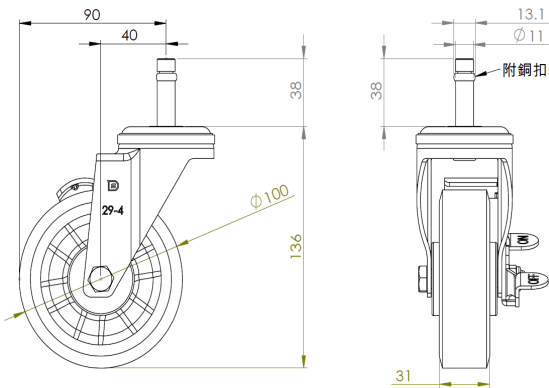
Technical Data

<input checked="" type="radio"/> Metric <input type="radio"/> Imperial	
Wheel Diameter	100mm
Wheel Width	31mm
Wheel Bearing	wheel equipped with ball bearings
pole diameter	38mm
pole length	11mm
Offset	40mm
Swivel Interference	180mm
Overall height	136mm
Swivel Radius	90mm
Hardness of tread	72±5° Shore A
Load capacity (dynamic)	125kgs
Load capacity (static)	187.5kgs
Temperature	-20°C to +60°C
Stand Style	Single Side Strike
Stainless steel	N/A
Conductive	N/A
Anti	N/A
Weight	0.65kgs
Standard	ISO22883

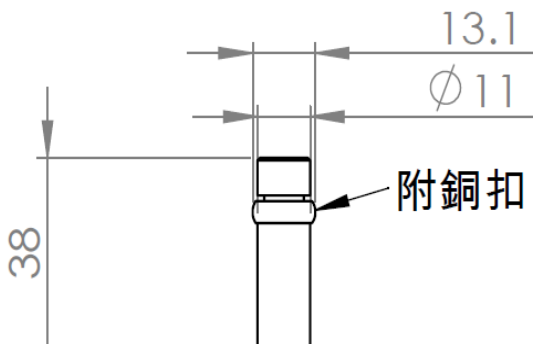
Advantages at a glance

Rolling Resistance	● ● ● ● ●
Operating Noise	● ● ● ● ●
Floor Surface Preservation	● ● ● ● ●

Dimensions



Mounting



Drawings are for reference only and may differ from the product

* For any deviation between metric and imperial spec, please refer to the metric spec.