

1129 Series



Full wheel diameter × wheel width 125 x 31mm

EAN

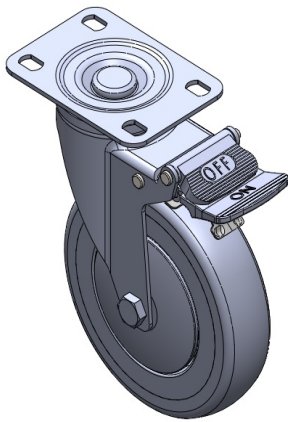
TW-4112905004014

YJ-X11290500454023

Castors with double brake and locking system. Base plate riveted stamped tripod - advanced hole  
Galvanized surface, base plate installation  
Impact-resistant polypropylene wheel core, thermoplastic elastomer (TPR) wheel tread  
Dark grey, wheel bearings – precision ball.

Wheel tread: Thermoplastic rubber elastomer (TPR)  
Wheel core: Made of high-quality impact-resistant polypropylene

Product descriptions are for reference only. The actual product shall prevail.



Picture may differ from original product

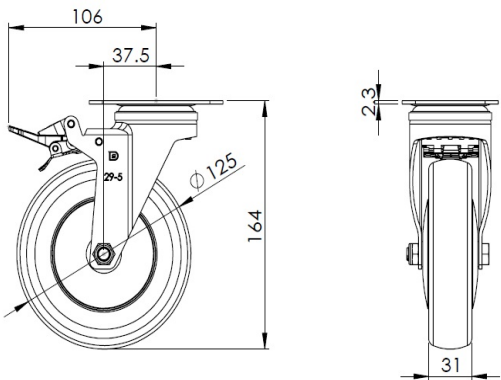
Technical Data

<input checked="" type="radio"/> Metric <input type="radio"/> Imperial	
Wheel Diameter	125mm
Wheel Width	31mm
Wheel Bearing	wheel equipped with ball bearings
Plate size	96 x 69mm
Base plate hole spacing	75 x 45mm
Plate hole	13 x 9mm
Offset	37.5mm
Swivel Interference	212mm
Overall height	164mm
Swivel Radius	106mm
Hardness of tread	72±5° Shore A
Load capacity (dynamic)	147kgs
Load capacity (static)	220.5kgs
Temperature	-20°C to +60°C
Stand Style	Double Elimination
Stainless steel	N/A
Conductive	N/A
Anti	N/A
Weight	0.85kgs
Standard	ISO22883

Advantages at a glance

Rolling Resistance	• • • • •
Operating Noise	• • • • •
Floor Surface Preservation	• • • • •

Dimensions



Mounting

