

1129 Medical Caster Series



W Resolute Wheel Diameter × Wheel Width 125 x 31mm

EAN

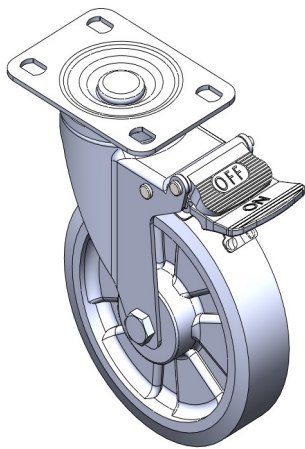
TW-4112905004020

YJ-X11290500454013

Castors with double brake and locking system. Base plate Riveted Stamping feet - high-grade holes Surface galvanized, Fork plate mounting Reinforced impact-resistant High-quality Impact-resistant Polypropylene Wheel Center,High-quality Thermoplastic Rubber (TPR) wheel Wheel Wheel Wheel Wheel Wheel Tread Dark gray, Bearing - precision balls.

Wheel tread: Thermoplastic rubber elastomer (TPR)  
Wheel Center: Made of high-quality impact-resistant polypropylene

Drawings are for reference only and may differ from the product



Picture may differ from original product

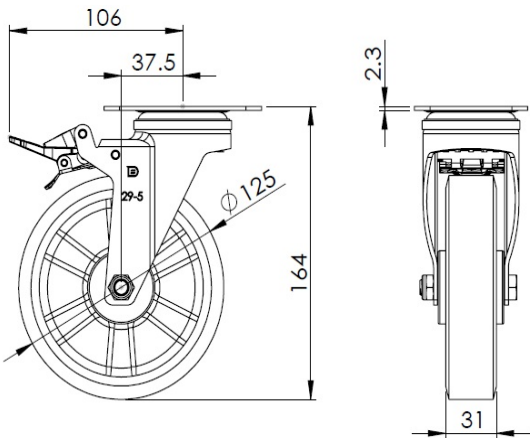
Technical Data

|  |                                |
|--|--------------------------------|
| <input checked="" type="radio"/> Metric <input type="radio"/> Imperial |                                |
| Wheel Diameter   | 125mm                          |
| Wheel Width  | 31mm                           |
| Wheel Bearing  | Wheels With Ball Bearings      |
| Plate Size   | 96 x 69mm                      |
| Bolt Hole Spacing  | 75 x 45mm                      |
| Plate Hole   | 13 x 9mm                       |
| Offset   | 37.5mm                         |
| Swivel Interference  | 212mm                          |
| Overall Height   | 164mm                          |
| Swivel Radius  | 106mm                          |
| Hardness Of Tread  | 72±5° Shore A                  |
| Load Capacity (Dynamic)  | 147kgs                         |
| Load Capacity (Static)   | 220.5kgs                       |
| Temperature  | -20°C to +60°C                 |
| Fork Type  | Swivel Caster With Total Brake |
| Stainless  | N/A                            |
| Electrical Conductivity  | N/A                            |
| Anti-Static  | N/A                            |
| Weight   | 0.85kgs                        |
| Standard   | ISO22883                       |

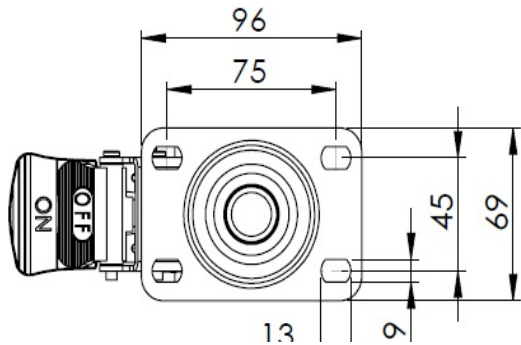
Advantages at a glance

|                            |           |
|----------------------------|-----------|
| Rolling Resistance         | • • • • • |
| Operating Noise            | • • • • • |
| Floor Surface Preservation | • • • • • |

Dimensions



Mounting



Drawings are for reference only and may differ from the product.

\* For any deviation between metric and imperial spec, please refer to the metric spec.