



1130 Medium Duty General Purposes Caster Series

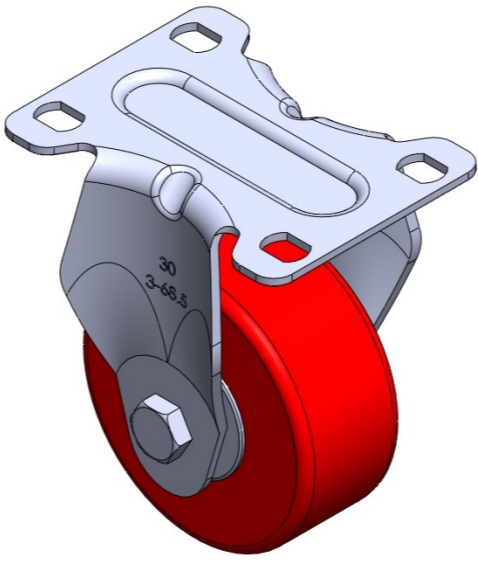
PU Wheel Diameter × Wheel Width 75 x 32mm

EAN
TW-4113003001006

Rigid Caster with Stamping Fabricated Caster Fork and 75 x 45 mm (3" x 1-3/4") Bolt Hole Spacing. Zine-Plated, Mounting Type - Top Plate. Cast Iron core with High Quality Polyurethane Wheel Tread. Red Cast Iron finish. Bearings: Ball Bearings.

Wheel tread: high quality polyurethane
Wheel Center: iron core/cast iron core

Drawings are for reference only and may differ from the product



Picture may differ from original product

Technical Data

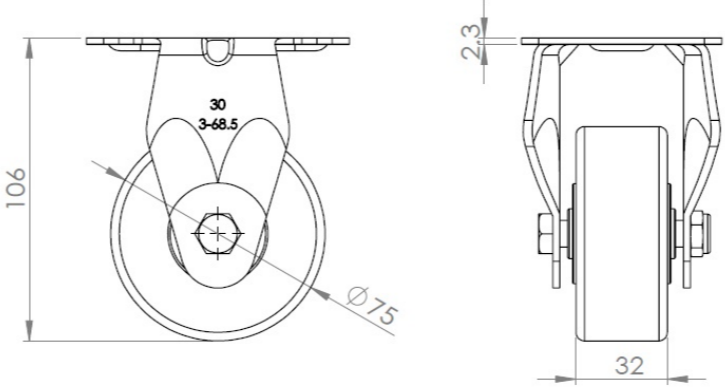
☒ Metric ☐ Imperial

| | |
|-------------------------|---------------------------|
| Wheel Diameter | 75mm |
| Wheel Width | 32mm |
| Wheel Bearing | Wheels With Ball Bearings |
| Plate Size | 92 x 70mm |
| Bolt Hole Spacing | 75X45mm |
| Plate Hole | 12 x 9mm |
| Overall Height | 106mm |
| Hardness Of Tread | 93±5° Shore A |
| Load Capacity (Dynamic) | 180kgs |
| Load Capacity (Static) | 270kgs |
| Temperature | -20°C to +70°C |
| Fork Type | Rigid Caster |
| Stainless | N/A |
| Electrical Conductivity | N/A |
| Anti-Static | N/A |
| Weight | 0.40kgs |
| Standard | ISO22883 |

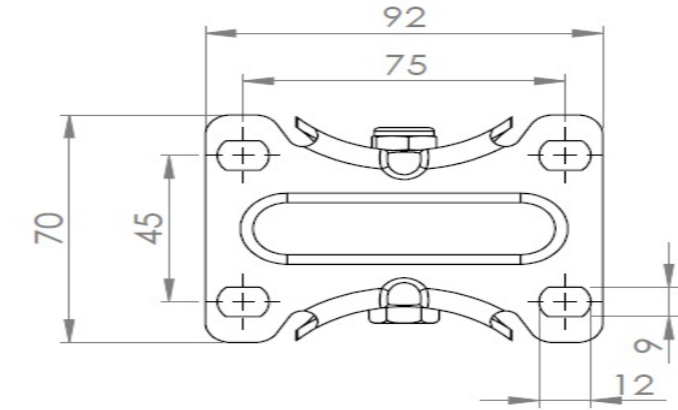
Advantages at a glance

| | |
|----------------------------|-----------|
| Rolling Resistance | ● ● ● ○ ○ |
| Operating Noise | ● ● ● ● ○ |
| Floor Surface Preservation | ● ● ● ● ○ |

Dimensions



Mounting



* For any deviation between metric and imperial spec, please refer to the metric spec.