



1130 Medium Duty General Purposes Caster Series

AQPU (blue) Wheel Diameter × Wheel Width 75 x 31mm

EAN  
TW-4113003001017

Rigid Caster with Stamping Fabricated Caster Fork and 75 x 45 mm (3" x 1-3/4") Bolt Hole Spacing. Zine-Plated, Mounting Type - Top Plate. Aluminum core with High Quality Polyurethane Wheel Tread. Blue color. Bearings: Ball Bearings.

Wheel tread: high quality polyurethane  
Wheel Center: aluminum core

Drawings are for reference only and may differ from the product



Picture may differ from original product

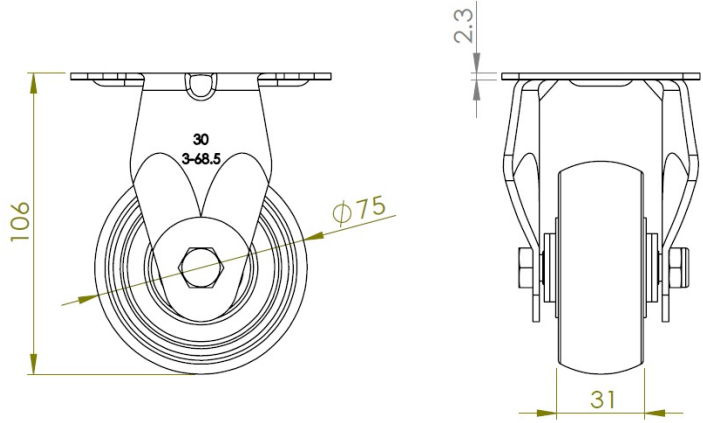
Technical Data

<input checked="" type="radio"/> Metric <input type="radio"/> Imperial	
Wheel Diameter	75mm
Wheel Width	31mm
Wheel Bearing	Wheels With Ball Bearings
Plate Size	92 x 70mm
Bolt Hole Spacing	75X45mm
Plate Hole	12 x 9mm
Overall Height	106mm
Hardness Of Tread	87±5° Shore A
Load Capacity (Dynamic)	160kgs
Load Capacity (Static)	240kgs
Temperature	-20°C to +70°C
Fork Type	Rigid Caster
Stainless	N/A
Electrical Conductivity	N/A
Anti-Static	N/A
Weight	0.40kgs
Standard	ISO22883

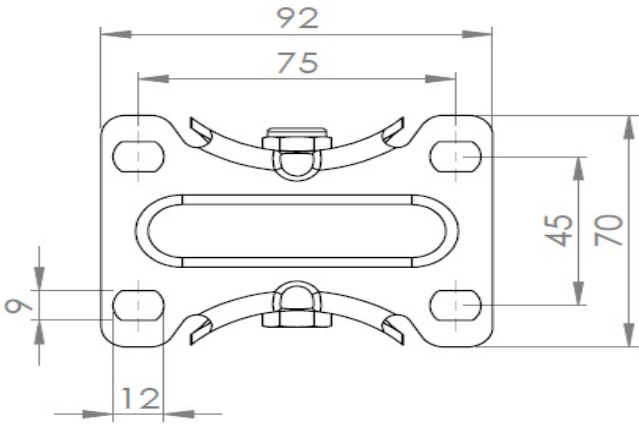
Advantages at a glance

Rolling Resistance	• • • • •
Operating Noise	• • • • •
Floor Surface Preservation	• • • • •

Dimensions



Mounting



\* For any deviation between metric and imperial spec, please refer to the metric spec.