

1130 Medium Duty General Purposes Caster Series



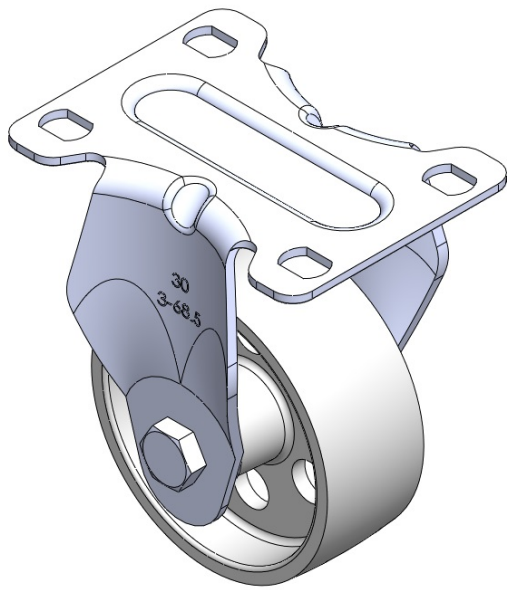
Cast Iron Wheel Diameter × Wheel Width 75 x 30mm

EAN
TW-4113003001026

Rigid Caster with Stamping Fabricated Caster Fork and 75 x 45 mm (3" x 1-3/4") Bolt Hole Spacing. Zine-Plated, Mounting Type - Top Plate. Cast Iron core and Wheel Tread. Black, Plain Bearing.

Wheel tread: cast iron
Wheel Center: cast iron

Drawings are for reference only and may differ from the product



Picture may differ from original product

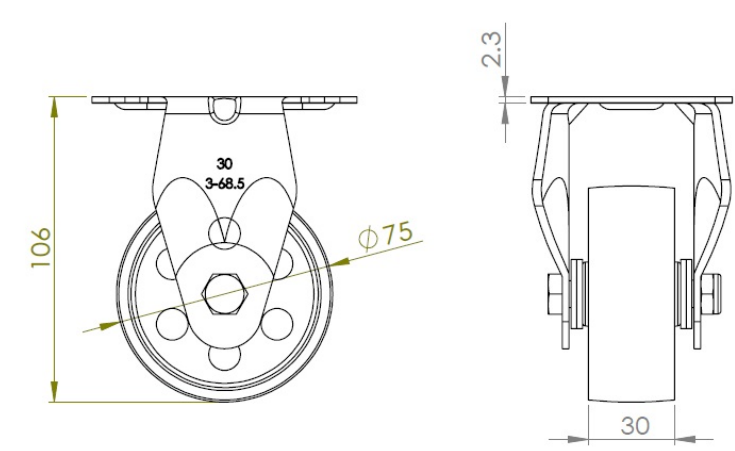
Technical Data

<input checked="" type="radio"/> Metric <input type="radio"/> Imperial	
Wheel Diameter	75mm
Wheel Width	30mm
Wheel Bearing	Wheel With Plain Bearing
Plate Size	92 x 70mm
Bolt Hole Spacing	75X45mm
Plate Hole	12 x 9mm
Overall Height	106mm
Load Capacity (Dynamic)	70kgs
Load Capacity (Static)	105kgs
Temperature	-20°C to +250°C
Fork Type	Rigid Caster
Stainless	N/A
Electrical Conductivity	N/A
Anti-Static	N/A
Weight	0.40kgs
Standard	ISO22883

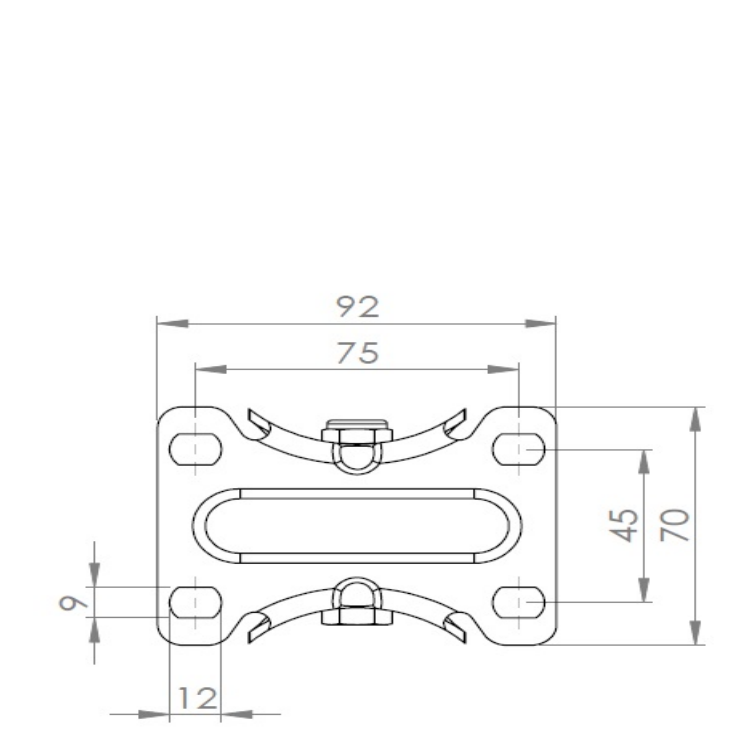
Advantages at a glance

Rolling Resistance	● ● ● ● ●
Operating Noise	● ○ ○ ○ ○
Floor Surface Preservation	● ○ ○ ○ ○

Dimensions



Mounting



* For any deviation between metric and imperial spec, please refer to the metric spec.