



1130 Medium Duty General Purposes Caster Series

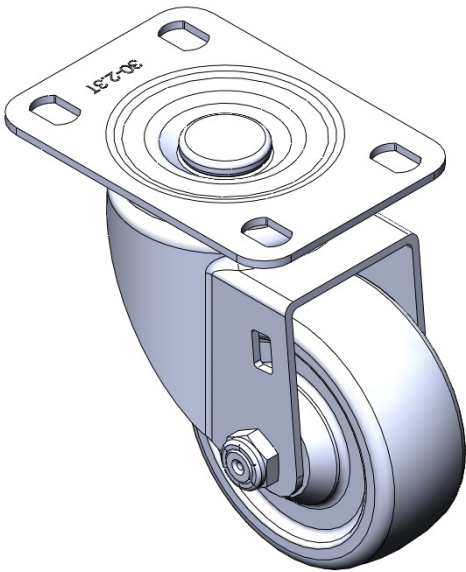
Rubber Wheel Diameter × Wheel Width 75 x 31mm

EAN  
TW-4113003002003

Swivel Caster with Riveted Fork and Stamping Fork - 75 x 45 mm (3" x 1-3/4") Bolt Hole Spacing Zine-Plated, Mounting Type - Top Plate Cast Iron core with High-Quality Resilient Rubber Wheel Tread Bearing - Plain Bearing.

Wheel surface: high-quality elastic rubber  
Wheel Center: iron core/cast iron core

Drawings are for reference only and may differ from the product



Picture may differ from original product

Technical Data

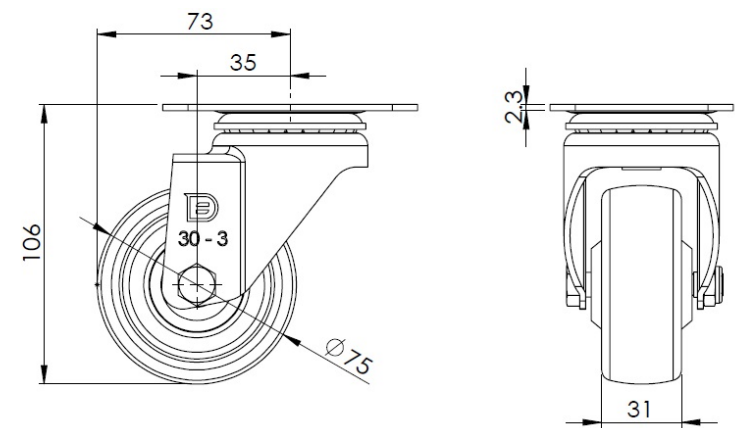
☒ Metric ☐ Imperial

Wheel Diameter	75mm
Wheel Width	31mm
Wheel Bearing	Wheel With Plain Bearing
Plate Size	96 x 69mm
Bolt Hole Spacing	75X45mm
Plate Hole	12 x 9mm
Offset	35mm
Swivel Interference	146mm
Overall Height	106mm
Swivel Radius	73mm
Hardness Of Tread	80±5° Shore A
Load Capacity (Dynamic)	90kgs
Load Capacity (Static)	135kgs
Temperature	-20°C to +120°C
Fork Type	Swivel Caster
Stainless	N/A
Electrical Conductivity	N/A
Anti-Static	N/A
Weight	0.60kgs
Standard	ISO22883

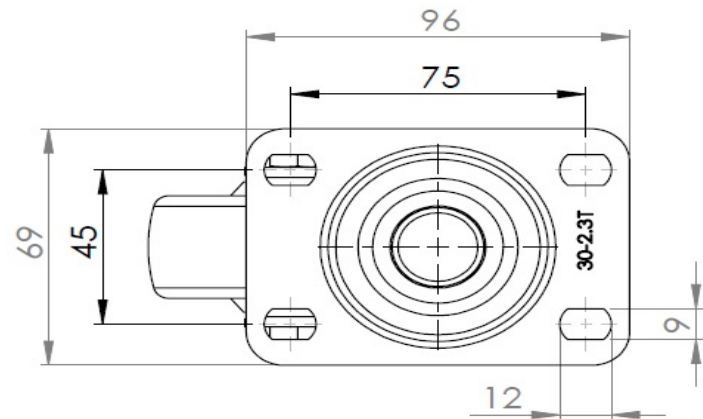
Advantages at a glance

Rolling Resistance	● ● ● ○ ○
Operating Noise	● ● ● ● ○
Floor Surface Preservation	● ● ● ● ○

Dimensions



Mounting



\* For any deviation between metric and imperial spec, please refer to the metric spec.