



1130 Medium Duty General Purposes Caster Series

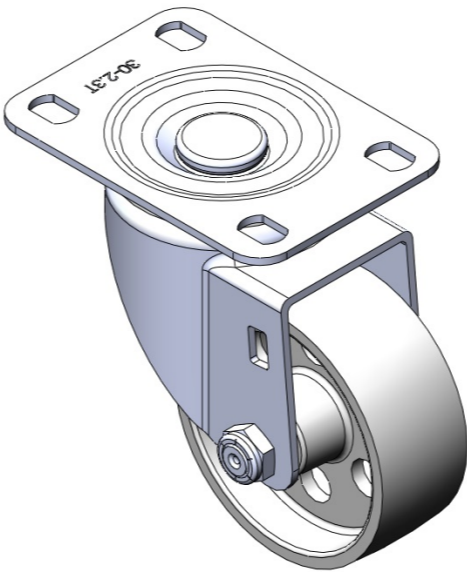
Cast Iron Wheel Diameter × Wheel Width 75 x 30mm

EAN
TW-4113003002020

Swivel Caster with Riveted Fork and Stamping Fork - 75 x 45 mm (3" x 1-3/4") Bolt Hole Spacing Zine-Plated, Mounting Type - Top Plate Cast Iron Wheel Center and Wheel Tread Black, wheel - Plain Bearing.

Wheel tread: cast iron
Wheel Center: cast iron

Drawings are for reference only and may differ from the product



Picture may differ from original product

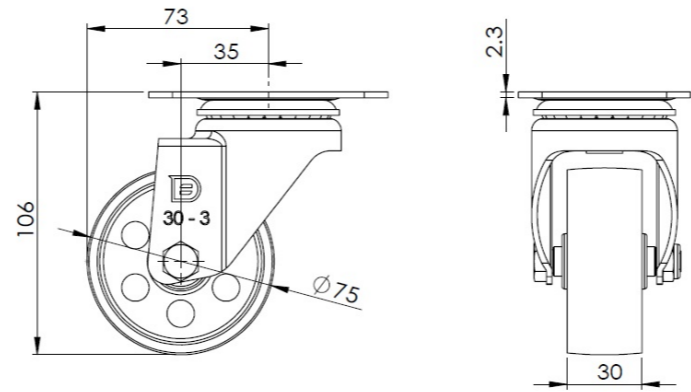
Technical Data

<input checked="" type="radio"/> Imperial <input type="radio"/> Metric	
Wheel Diameter	3 "
Wheel Width	1-3/16 "
Wheel Bearing	Wheel With Plain Bearing
Plate Size	3-7/8 " x 2-3/4 "
Bolt Hole Spacing	3
Plate Hole	9/16 " x 23/64 "
Offset	1-3/8 "
Swivel Interference	5-13/16 "
Overall Height	4-1/4 "
Swivel Radius	2-15/16 "
Load Capacity (Dynamic)	198lbs
Load Capacity (Static)	298lbs
Temperature	-4°F to +482°F
Fork Type	Swivel Caster
Stainless	N/A
Electrical Conductivity	N/A
Anti-Static	N/A
Weight	1.3lbs
Standard	ISO22883

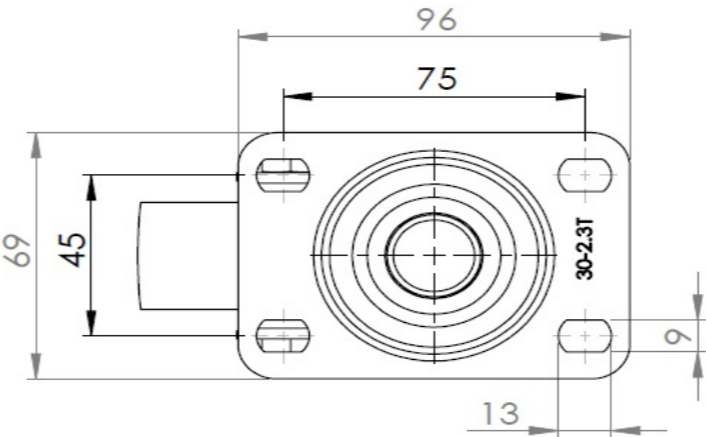
Advantages at a glance

Rolling Resistance	● ● ● ● ●
Operating Noise	● ○ ○ ○ ○
Floor Surface Preservation	● ○ ○ ○ ○

Dimensions



Mounting



* For any deviation between metric and imperial spec, please refer to the metric spec.