

1130 Medium Duty General Purposes Caster Series



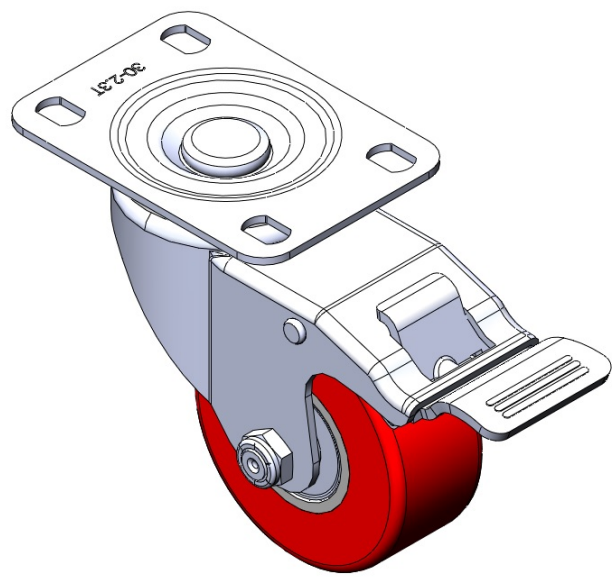
PU Wheel Diameter × Wheel Width 75 x 32mm

EAN
TW-4113003004007

Casters with Total Brakes and a With locking system. High-Quality Top Plate with Riveted Fork. Hole Zine-Plated, Mounting Type - Top Plate. Cast Iron core with High Quality Polyurethane Wheel Tread. Red Cast Iron finish, Bearing with Ball Bearings.

Wheel tread: high quality polyurethane
Wheel Center: iron core/cast iron core

Drawings are for reference only and may differ from the product



Picture may differ from original product

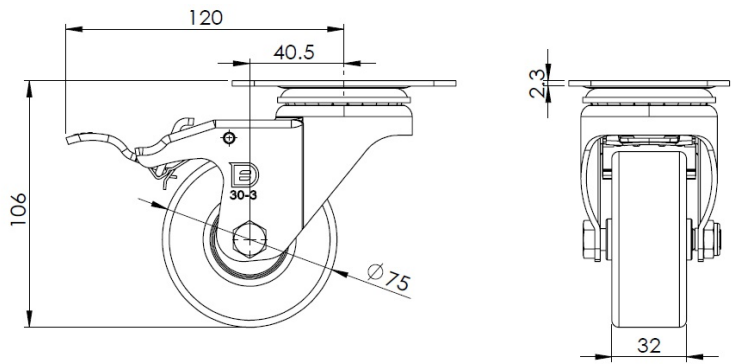
Technical Data

<input checked="" type="radio"/> Metric <input type="radio"/> Imperial	
Wheel Diameter	75mm
Wheel Width	32mm
Wheel Bearing	Wheels With Ball Bearings
Plate Size	96 x 69mm
Bolt Hole Spacing	75X45mm
Plate Hole	13 x 9mm
Offset	40.5mm
Swivel Interference	240mm
Overall Height	106mm
Swivel Radius	120mm
Hardness Of Tread	93±5° Shore A
Load Capacity (Dynamic)	180kgs
Load Capacity (Static)	270kgs
Temperature	-20°C to +70°C
Fork Type	Swivel Caster With Total Brake
Stainless	N/A
Electrical Conductivity	N/A
Anti-Static	N/A
Weight	0.75kgs
Standard	ISO22883

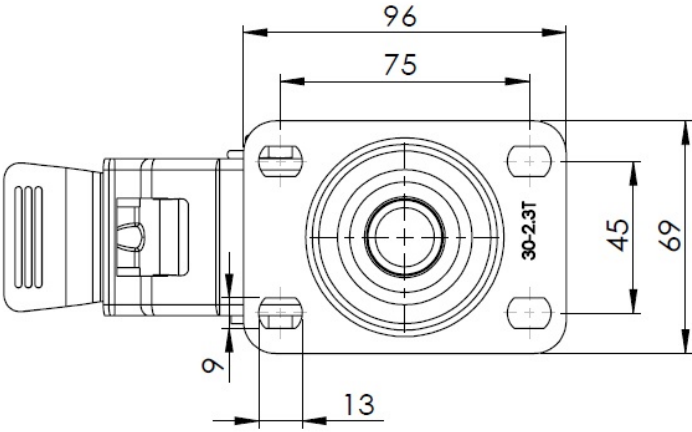
Advantages at a glance

Rolling Resistance	● ● ● ○ ○
Operating Noise	● ● ● ● ○
Floor Surface Preservation	● ● ● ● ○

Dimensions



Mounting



* For any deviation between metric and imperial spec, please refer to the metric spec.