

1130 Series 30 American Standard Tripod Series



Rubber wheel wheel diameter × wheel width 100 x 31mm

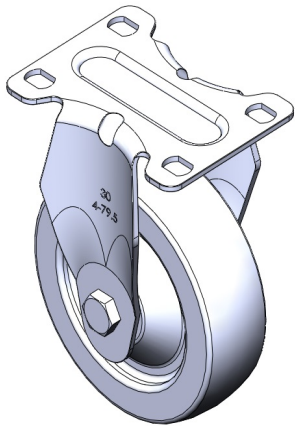
EAN

TW-4113004001002

Fixed castors, one-piece stamped footrest - advanced holes  
Galvanized surface, base plate installation  
High-quality elastic rubber wheel core and wheel surface  
Wheels—mid-tube type.

Wheel surface: high quality elastic rubber  
Wheel core: high quality elastic rubber

Product descriptions are for reference only. The actual product shall prevail.



Picture may differ from original product

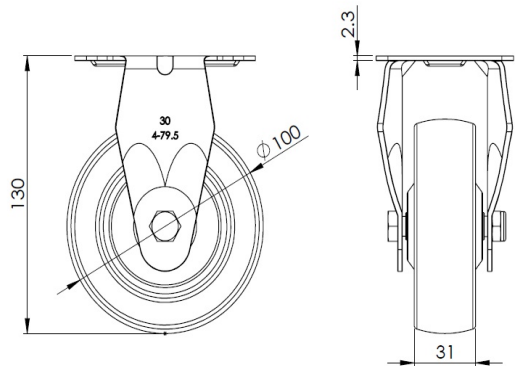
Technical Data

<input checked="" type="radio"/> Metric <input type="radio"/> Imperial	
Wheel Diameter	100mm
Wheel Width	31mm
Wheel Bearing	wheels with a central tube
Plate size	92 x 70mm
Base plate hole spacing	75 x 45mm
Plate hole	12 x 9mm
Overall height	130mm
Hardness of tread	80±5° Shore A
Load capacity (dynamic)	80kgs
Load capacity (static)	120kgs
Temperature	-20°C to +120°C
Stand Style	fixed
Stainless steel	N/A
Conductive	N/A
Anti	N/A
Weight	0.45kgs
Standard	ISO22883

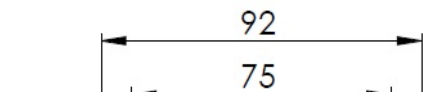
Advantages at a glance

Rolling Resistance	● ● ● ○ ○
Operating Noise	● ● ● ● ○
Floor Surface Preservation	● ● ● ● ○

Dimensions



Mounting



Drawings are for reference only and may differ from the product.

\* For any deviation between metric and imperial spec, please refer to the metric spec.

© All rights reserved 2025 Deshang Shanghaolun www.dersheng.com

