

1130 Series 30 American Standard Tripod Series



PP wheel wheel diameter × wheel width 100 x 31mm

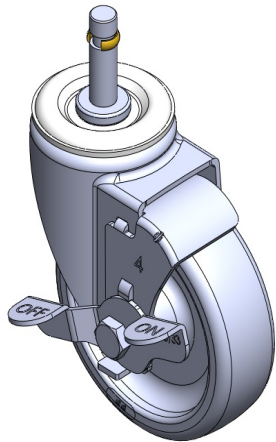
EAN

TW-4113004004002

Castors with side brake and locking system. Insert riveted stamping tripod-Ø11x38L  
Surface plating, plug-in installation device, (UV resistant), with copper buckle  
Polypropylene wheel core, wheel surface  
Black, wheels—mid-tube.

Wheel surface: PP polypropylene  
Wheel core: PP polypropylene

Product descriptions are for reference only. The actual product shall prevail.



Picture may differ from original product

Technical Data

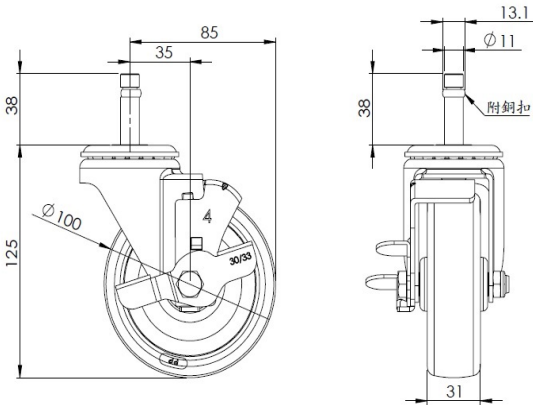
☒ Metric ☐ Imperial

Wheel Diameter	100mm
Wheel Width	31mm
Wheel Bearing	wheels with a central tube
pole diameter	11mm
pole length	38mm
Offset	35mm
Swivel Interference	170mm
Overall height	125mm
Swivel Radius	85mm
Hardness of tread	65±5° Shore D
Load capacity (dynamic)	90kgs
Load capacity (static)	135kgs
Temperature	-10°C to +60°C
Stand Style	Single Side Strike
Stainless steel	N/A
Conductive	N/A
Anti	N/A
Weight	0.55kgs
Standard	ISO22883

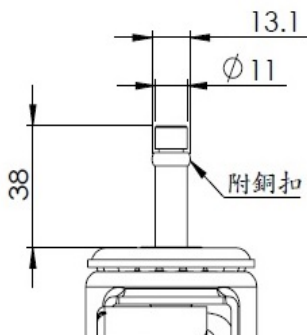
Advantages at a glance

Rolling Resistance	● ● ● ● ●
Operating Noise	● ● ● ○ ○
Floor Surface Preservation	● ● ● ○ ○

Dimensions



Mounting



Drawings are for reference only and may differ from the product

\* For any deviation between metric and imperial spec, please refer to the metric spec.