

1153 Heavy Duty 2" Wide General Purposes Caster Series



PPR Wheel Diameter × Wheel Width 75 x 25 mm

EAN

TW-41153080000X KS-41153080000X

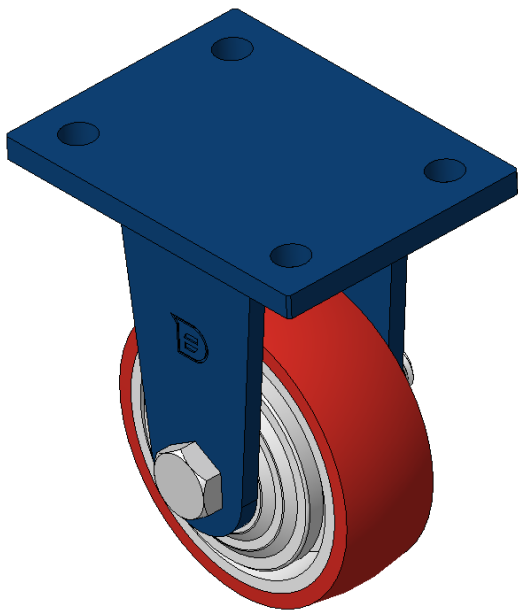
YJ-41153080000X VN-41153080000X

Swivel Caster with Riveted Fork and Stamping Fork.
Zine-Plated, Mounting Type - Top Plate.
Reinforced Polypropylene Wheel Center and Wheel Tread.
Bearings—Ball Bearings.

Wheel surface: Thermoplastic (PA6)

Wheel Center: Thermoplastic (PA6)

Drawings are for reference only and may differ from the product



Picture may differ from original product

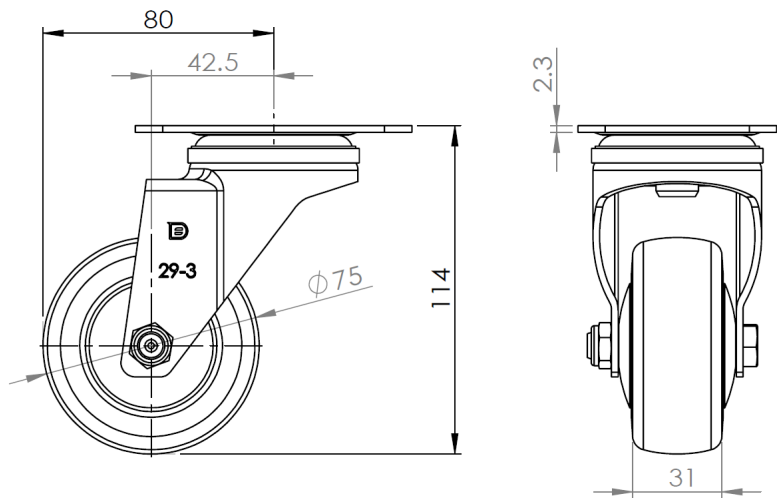
Technical Data

<input checked="" type="radio"/> Metric <input type="radio"/> Imperial	
Wheel Diameter	150mm
Wheel Width	40mm
Wheel Bearing	Wheels With Ball Bearings
Plate Size	100 x 100mm
Bolt Hole Spacing	75 x 45mm
Plate Hole	119mm
Offset	100mm
Swivel Interference	100mm
Overall Height	200mm
Swivel Radius	100mm
Hardness Of Tread	75±5° Shore D
Load Capacity (Dynamic)	500kgs
Load Capacity (Static)	500kgs
Temperature	-20°C to +80°C
Fork Type	Swivel Caster
Stainless	N/A
Electrical Conductivity	N/A
Anti-Static	N/A
Weight	0.50kgs
Standard	ISO22883

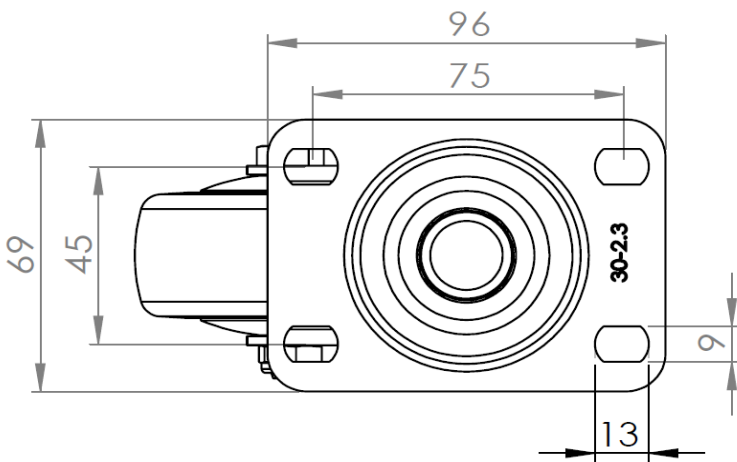
Advantages at a glance

Rolling Resistance	● ● ● ● ●
Operating Noise	● ● ○ ○ ○
Floor Surface Preservation	● ● ○ ○ ○

Dimensions



Mounting



* For any deviation between metric and imperial spec, please refer to the metric spec.