

1153-1 53 Classic European Style Series



Full-effect elastic wheel Wheel diameter x wheel width 200 x 48mm

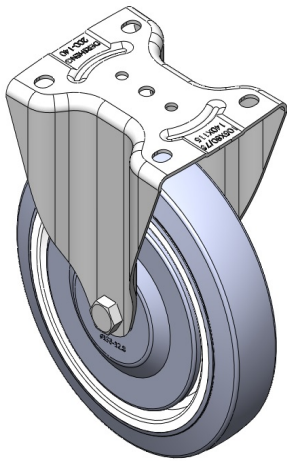
EAN

TW-4115308001025

Fixed casters, one-piece stamped tripod
Galvanized surface, baseplate installation, with large cover
Impact-resistant polypropylene wheel core, thermoplastic elastomer (TPR) wheel tread
Gray, wheel bearings—precision ball.

Wheel tread: Thermoplastic rubber elastomer (TPR)
Wheel core: Made of high-quality impact-resistant polypropylene

Product descriptions are for reference only. The actual product shall prevail.



Picture may differ from original product

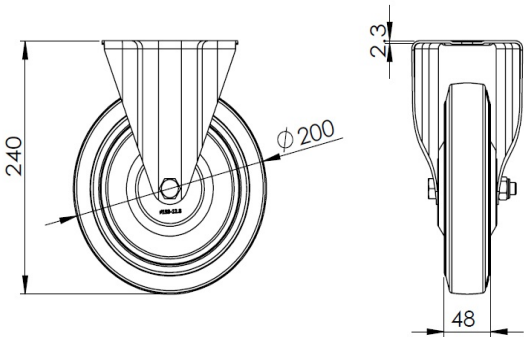
Technical Data

<input checked="" type="radio"/> Metric <input type="radio"/> Imperial	
Wheel Diameter	200mm
Wheel Width	48mm
Wheel Bearing	wheel equipped with ball bearings
Plate size	140 x 115mm
Base plate hole spacing	105 x 77.5mm
Plate hole	13.5 x 11mm
Overall height	240mm
Hardness of tread	72±5° Shore A
Load capacity (dynamic)	325kgs
Load capacity (static)	487.5kgs
Temperature	-20°C to +60°C
Stand Style	fixed
Stainless steel	N/A
Conductive	N/A
Anti	N/A
Weight	2.00kgs
Standard	ISO22883

Advantages at a glance

Rolling Resistance	• • • • •
Operating Noise	• • • • •
Floor Surface Preservation	• • • • •

Dimensions



Mounting

For any deviation between metric and imperial spec, please refer to the metric spec.