



1168 Levelling Caster Series

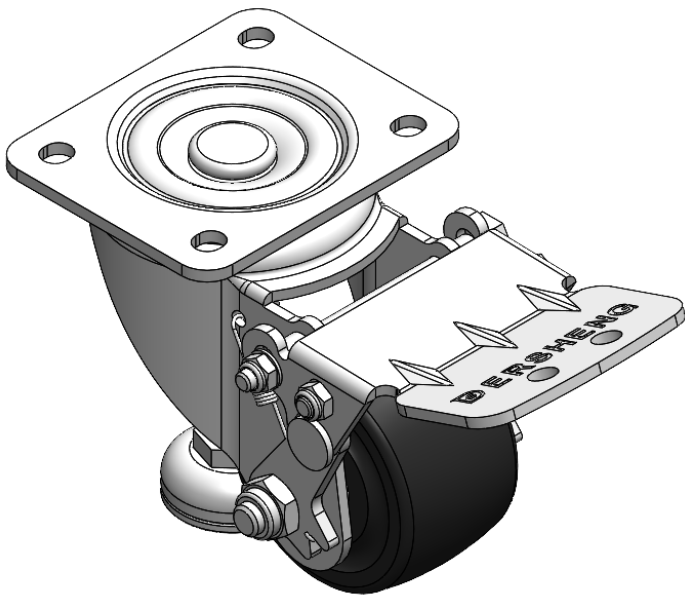
King Kong Wheel (black) Wheel Diameter × Wheel Width 75×45 mm

EAN
TW-4116803002010
YJ-11680300712113

Adjustable lifting Casters, Riveted and Stamping Top Plate with 44.5 x 30mm (1-3/4" x 1-1/8") Bolt Hole Spacings, long pedals
Zine-Plated surface, Mounting Type - Top Plate device, with adjustable support Fork
Reinforced Polypropylene and Wheel Tread, Wheel Tread thermoplastic sealant protection
Black, Bearing—Ball Bearings.

Wheel surface: Thermoplastic (POK)
Wheel Center: Thermoplastic (POK)

Drawings are for reference only and may differ from the product



Picture may differ from original product

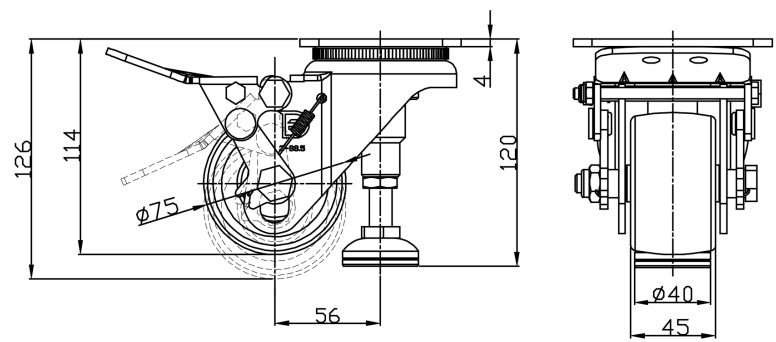
Technical Data

<input checked="" type="radio"/> Metric <input type="radio"/> Imperial	
Wheel Diameter	75mm
Wheel Width	45mm
Wheel Bearing	Wheels With Ball Bearings
Plate Size	105 x 85mm
Bolt Hole Spacing	80 x 60mm
Plate Hole	10.5 x 9mm
Offset	56mm
Swivel Interference	302mm
Overall Height	120mm
Swivel Radius	151mm
Hardness Of Tread	80±5° Shore D
Load Capacity (Dynamic)	260kgs
Load Capacity (Static)	1000kgs
Temperature	-25°C to +120°C
Fork Type	Swivel Caster
Stainless	N/A
Electrical Conductivity	N/A
Anti-Static	N/A
Weight	1.93kgs
Standard	ISO22883

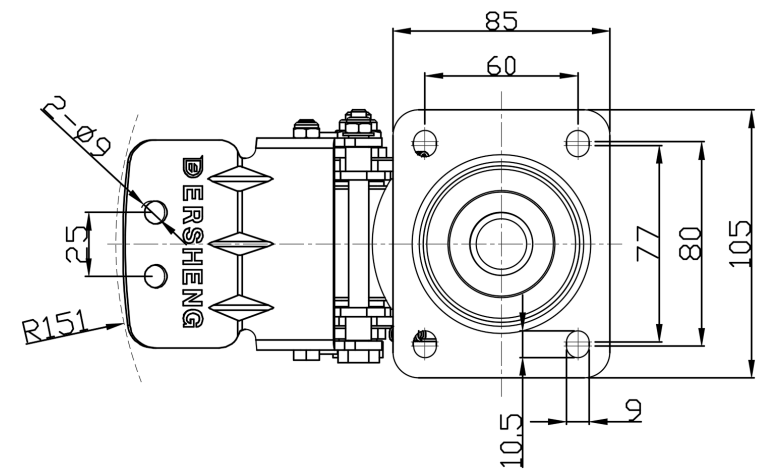
Advantages at a glance

Rolling Resistance	● ● ● ● ●
Operating Noise	● ● ○ ○ ○
Floor Surface Preservation	● ● ○ ○ ○

Dimensions



Mounting



* For any deviation between metric and imperial spec, please refer to the metric spec.