



1168 Levelling Caster Series

King Kong Wheel (black) Wheel Diameter × Wheel Width 75×45 mm

EAN

TW-4116803002010

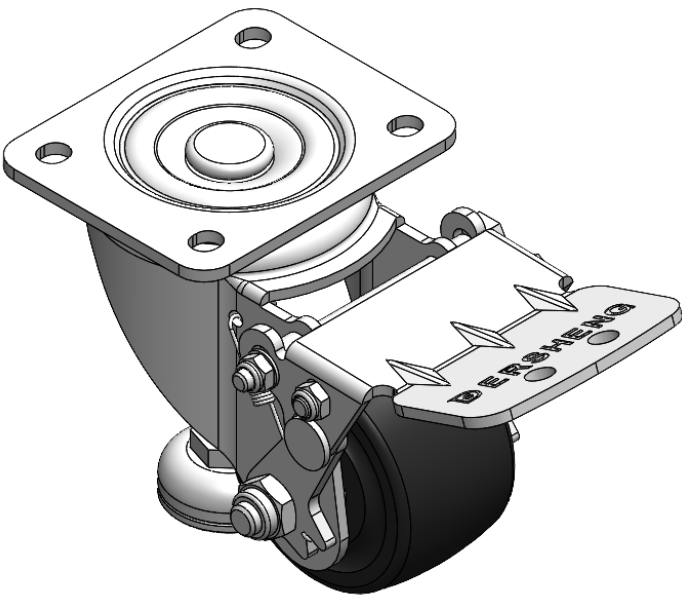
YJ-11680300712113

Adjustable lifting Casters, Riveted and Stamping Top Plate with 44.5 x 30mm (1-3/4" x 1-1/8") Bolt Hole Spacings, long pedals  
Zine-Plated surface, Mounting Type - Top Plate device, with adjustable support Fork  
Reinforced Polypropylene and Wheel Tread, Wheel Tread thermoplastic sealant protection  
Black, Bearing—Ball Bearings.

Wheel surface: Thermoplastic (POK)

Wheel Center: Thermoplastic (POK)

Drawings are for reference only and may differ from the product



Picture may differ from original product

Technical Data

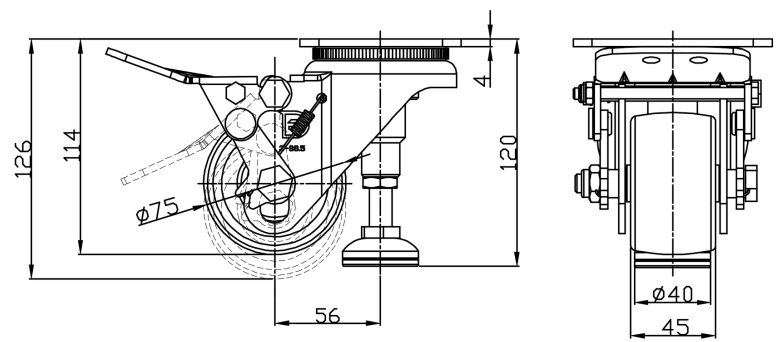
Imperial Metric

Wheel Diameter	3 "
Wheel Width	1-13/16 "
Wheel Bearing	Wheels With Ball Bearings
Plate Size	4-3/16 " x 3-7/16 "
Bolt Hole Spacing	3-3/16 " x 2-7/16 "
Plate Hole	3/8 " x 23/64 "
Offset	2-1/4 "
Swivel Interference	12 "
Overall Height	4-13/16 "
Swivel Radius	6 "
Hardness Of Tread	80±5° Shore D
Load Capacity (Dynamic)	573lbs
Load Capacity (Static)	2205lbs
Temperature	-13°F to + 248°F
Fork Type	Swivel Caster
Stainless	N/A
Electrical Conductivity	N/A
Anti-Static	N/A
Weight	4.3lbs
Standard	ISO22883

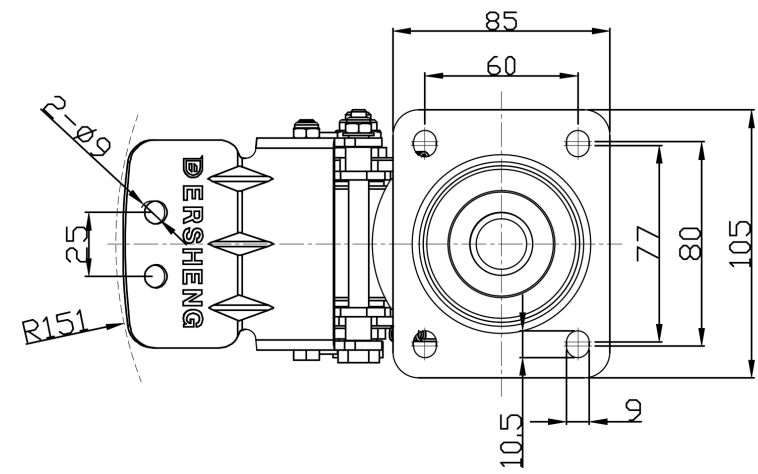
Advantages at a glance

Rolling Resistance	● ● ● ● ●
Operating Noise	● ● ○ ○ ○
Floor Surface Preservation	● ● ○ ○ ○

Dimensions



Mounting



\* For any deviation between metric and imperial spec, please refer to the metric spec.