



PPR Series

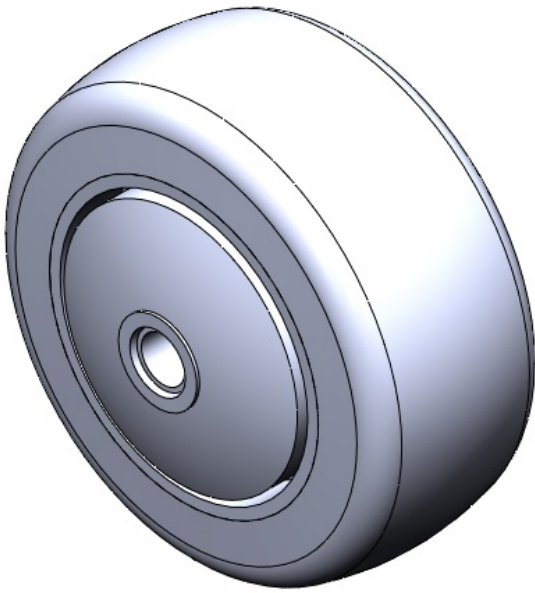
Wheel Diameter × Wheel Width 75× 31mm

EAN
TW-412350300009

Easy to Floor Surface Preservation, Non-Marking, Easy To Maneuver, and capable of handling heavy loads.
Low rolling and Swivel Resistance, Resistant To many other aggressive substances..
Color: Pearlescent dark gray, with Dust Cap and plastic Plain Bearing

Wheel Tread: High-quality impact-resistant polypropylene
Wheel Center: Thermoplastic rubber elastomer
Bearing: ball bearing

Drawings are for reference only and may differ from the product



Picture may differ from original product

Technical Data

<input checked="" type="radio"/> Metric <input type="radio"/> Imperial	
Wheel Diameter(D)	75mm
Wheel Width(T2)	31mm
Wheel Bearing	Without Bearing
Axle Bore(d)	8mm
Axle Bore(S)	mm
Bearing Bore Depth(t)	
Hub Lenth(T1)	41.5mm
Hardness Of Tread	82±5° Shore A
Load Capacity (Dynamic)	80kgs
Load Capacity (Static)	120kgs
Temperature	-20°C to +60°C
Electrical Conductivity	N/A
Anti-Static	N/A
Weight	0.128kgs
Standard	ISO22883

Advantages at a glance

Rolling Resistance	● ● ● ● ○
Operating Noise	● ● ● ● ○
Floor Surface Preservation	● ● ● ● ●

2D Dimensional Drawing of Single Wheel

* For any deviation between metric and imperial spec, please refer to the metric spec.