



PPR Series

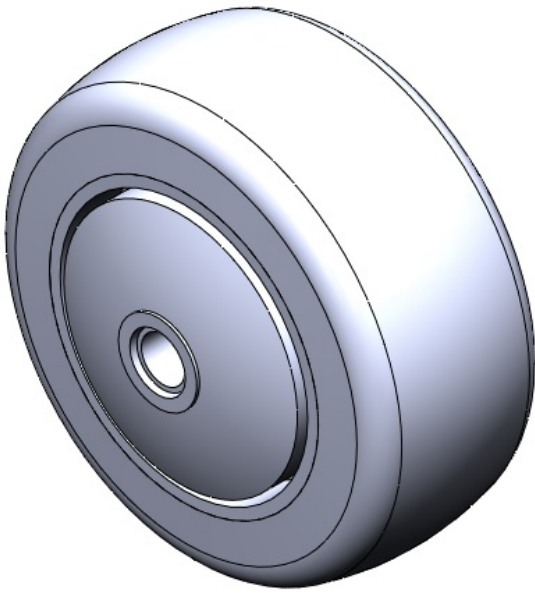
Wheel Diameter × Wheel Width 75× 31mm

EAN  
TW-412350300010

Easy to use, Non-Marking, Easy To Maneuver, and capable of handling heavy loads. Low rolling and Swivel Resistance, Resistant To many other aggressive substances.. Color: Pearlescent dark gray, with Dust Cap and plastic Plain Bearing.

Wheel Tread: High-quality impact-resistant polypropylene  
Wheel Center: Thermoplastic rubber elastomer  
Bearing: ball bearing

Drawings are for reference only and may differ from the product



Picture may differ from original product

Technical Data

<input checked="" type="radio"/> Imperial <input type="radio"/> Metric	
Wheel Diameter(D)	3 "
Wheel Width(T2)	1-1/4 "
Wheel Bearing	Ball Bearing
Axle Bore(d)	3/8 "
Axle Bore(S)	—
Bearing Bore Depth(t)	—
Hub Lenth(T1)	1-11/16 "
Hardness Of Tread	82±5° Shore A
Load Capacity (Dynamic)	176lbs
Load Capacity (Static)	265lbs
Temperature	-4°F to +140°F
Electrical Conductivity	N/A
Anti-Static	N/A
Weight	0.3lbs
Standard	ISO22883

Advantages at a glance

Rolling Resistance	● ● ● ● ○
Operating Noise	● ● ● ● ○
Floor Surface Preservation	● ● ● ● ●

2D Dimensional Drawing of Single Wheel

\* For any deviation between metric and imperial spec, please refer to the metric spec.