



PPR Series

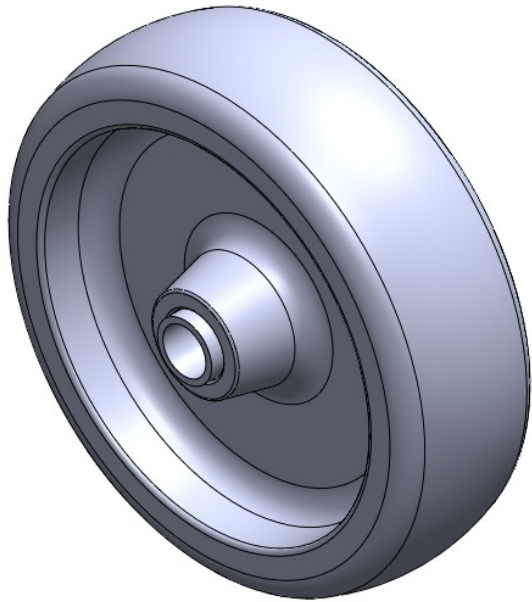
Wheel Diameter ×Wheel Width 100× 30mm

EAN  
TW-412350400045

Easy to Floor Surface Preservation, Non-Marking, Easy To Maneuver, and capable of bearing heavy loads.  
Low rolling and Swivel Resistance, Resistant To many other aggressive substances..  
Color: Pearlescent dark gray, with Plain Bearing

Wheel Tread: High-quality impact-resistant polypropylene  
Wheel Center: Thermoplastic rubber elastomer  
Bearing: —

Drawings are for reference only and may differ from the product



Picture may differ from original product

Technical Data

<input checked="" type="radio"/> Metric <input type="radio"/> Imperial	
Wheel Diameter(D)	100mm
Wheel Width(T2)	30.5mm
Wheel Bearing	Roller Bearing
Axle Bore(d)	10mm
Axle Bore(S)	mm
Bearing Bore Depth(t)	
Hub Lenth(T1)	39.5mm
Hardness Of Tread	82±5° Shore A
Load Capacity (Dynamic)	80kgs
Load Capacity (Static)	120kgs
Temperature	-20°C to +60°C
Electrical Conductivity	N/A
Anti-Static	N/A
Weight	0.162kgs
Standard	ISO22883

Advantages at a glance

Rolling Resistance	● ● ● ● ○
Operating Noise	● ● ● ● ○
Floor Surface Preservation	● ● ● ● ●

2D Dimensional Drawing of Single Wheel

\* For any deviation between metric and imperial spec, please refer to the metric spec.