

PPR Series

Wheel Diameter ×Wheel Width 100× 30mm

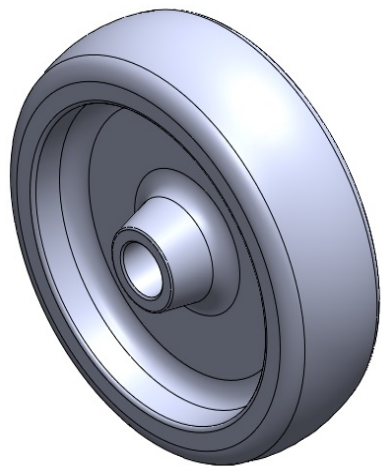
EAN

TW-412350400047

It's easy to use, Non-Marking, and Easy To Maneuver, capable of handling heavy loads. It offers low rolling and Swivel Resistance and is Resistant To many other aggressive substances.. Color: Pearlescent Dark Gray

Wheel Tread: High-quality impact-resistant polypropylene  
Wheel Center: Thermoplastic rubber elastomer  
Bearing: —

Drawings are for reference only and may differ from the product



Picture may differ from original product

Technical Data

<input checked="" type="radio"/> Metric <input type="radio"/> Imperial	
Wheel Diameter(D)	100mm
Wheel Width(T2)	30.5mm
Wheel Bearing	Bearingless
Axle Bore(d)	—mm
Axle Bore(S)	13
Bearing Bore Depth(t)	—
Hub Lenth(T1)	35mm
Hardness Of Tread	82±5° Shore A
Load Capacity (Dynamic)	80kgs
Load Capacity (Static)	120kgs
Temperature	-20°C to +60°C
Electrical Conductivity	N/A
Anti-Static	N/A
Weight	0.159kgs
Standard	ISO22883

Advantages at a glance

Rolling Resistance	● ● ● ● ○
Operating Noise	● ● ● ● ○
Floor Surface Preservation	● ● ● ● ●

2D Dimensional Drawing of Single Wheel

