



PPR Series

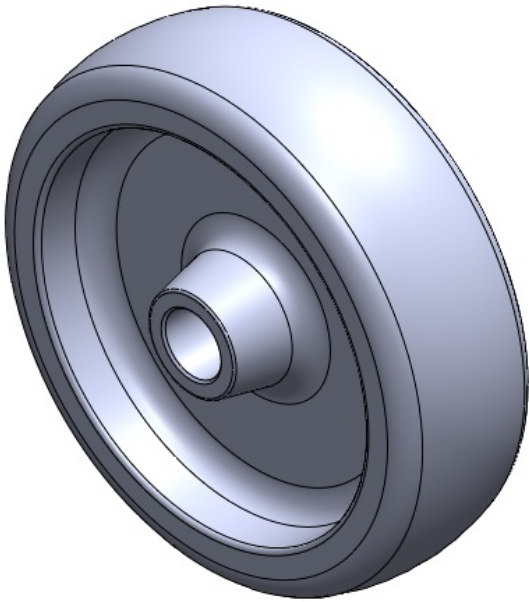
Wheel Diameter ×Wheel Width 100× 30mm

EAN
TW-412350400047

It's easy to use, Non-Marking, and Easy To Maneuver, capable of handling heavy loads. It offers low rolling and Swivel Resistance and is Resistant To many other aggressive substances.. Color: Pearlescent Dark Gray

Wheel Tread: High-quality impact-resistant polypropylene
Wheel Center: Thermoplastic rubber elastomer
Bearing: —

Drawings are for reference only and may differ from the product



Picture may differ from original product

Technical Data

<input checked="" type="radio"/> Imperial <input type="radio"/> Metric	
Wheel Diameter(D)	4 "
Wheel Width(T2)	1-1/4 "
Wheel Bearing	Without Bearing
Axle Bore(d)	—
Axle Bore(S)	9/16 "
Bearing Bore Depth(t)	<div style=
Hub Lenth(T1)	1-3/8 "
Hardness Of Tread	82±5° Shore A
Load Capacity (Dynamic)	176lbs
Load Capacity (Static)	265lbs
Temperature	-4°F to +140°F
Electrical Conductivity	N/A
Anti-Static	N/A
Weight	0.4lbs
Standard	ISO22883

Advantages at a glance

Rolling Resistance	● ● ● ● ○
Operating Noise	● ● ● ● ○
Floor Surface Preservation	● ● ● ● ●

2D Dimensional Drawing of Single Wheel

* For any deviation between metric and imperial spec, please refer to the metric spec.