

1153 Series

WMRC Wheel 150 x 40mm

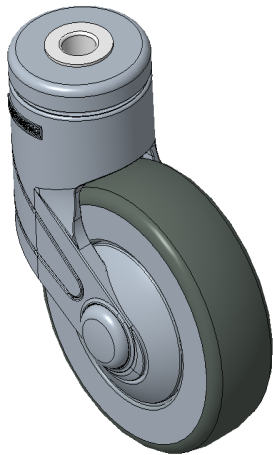
EAN

TW-7777777

Movable casters, bottom plate riveted stamped tripod
Galvanized surface, base plate installation
Thermoplastic plastic wheel core and wheel surface
Wheel bearings—precision balls.

Wheel surface: Thermoplastic (PA6)
Wheel core: Not shown

Product descriptions are for reference only. The actual product shall prevail.



Picture may differ from original product

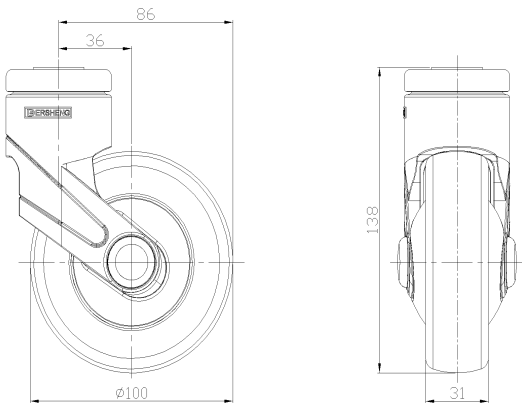
Technical Data

<input checked="" type="radio"/> Metric <input type="radio"/> Imperial	
Wheel Diameter	150mm
Wheel Width	40mm
Wheel Bearing	wheel equipped with ball bearings
Plate size	137 x 105mm
Base plate hole spacing	105 x 77.5mm
Plate hole	13.5 x 12mm
Offset	54mm
Swivel Interference	260mm
Overall height	190mm
Swivel Radius	60mm
Hardness of tread	75±5° Shore D
Load capacity (dynamic)	100kgs
Load capacity (static)	200kgs
Temperature	-20°C to +80°C
Stand Style	activity
Stainless steel	N/A
Conductive	N/A
Anti	N/A
Weight	0.50kgs
Standard	ISO22883

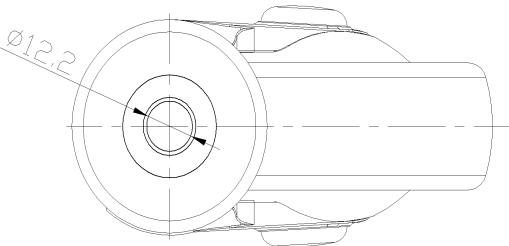
Advantages at a glance

Rolling Resistance	● ● ● ● ●
Operating Noise	● ● ○ ○ ○
Floor Surface Preservation	● ● ○ ○ ○

Dimensions



Mounting



Drawings are for reference only and may differ from the product.

* For any deviation between metric and imperial spec, please refer to the metric spec.