

1129 Series

PPR wheel wheel diameter × wheel width 75 x 31mm

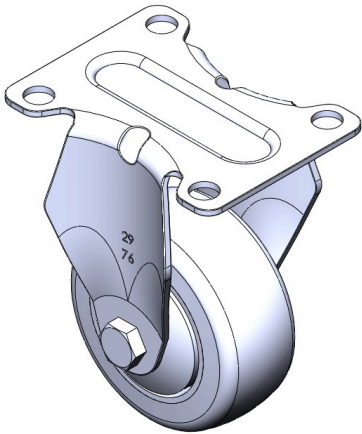
EAN

TW-4112903001002

Fixed casters, one-piece stamped tripod  
Surface plating, bottom plate mounting device  
Impact-resistant polypropylene wheel core, thermoplastic elastomer (TPR) wheel surface  
Dark grey, wheel bearing - precision ball.

Wheel surface: thermoplastic rubber elastomer (TPR)  
Wheel core: Made of high-quality impact-resistant polypropylene

Product descriptions are for reference only. The actual product shall prevail.



Picture may differ from original product

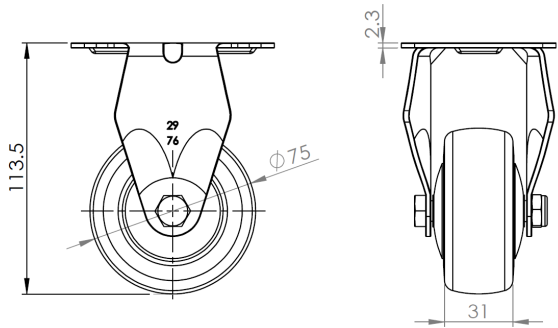
Technical Data

|                         |                                   |
|-------------------------|-----------------------------------|
| ● Metric ○ Imperial     |                                   |
| Wheel Diameter          | 75mm                              |
| Wheel Width             | 31mm                              |
| Wheel Bearing           | wheel equipped with ball bearings |
| Plate size              | 92 x 70mm                         |
| Base plate hole spacing | 72 x 53mm                         |
| Plate hole              | 10mm                              |
| Overall height          | 113.5mm                           |
| Hardness of tread       | 82±5° Shore A                     |
| Load capacity (dynamic) | 70kgs                             |
| Load capacity (static)  | 105kgs                            |
| Temperature             | -20°C to +60°C                    |
| Stand Style             | fixed                             |
| Stainless steel         | N/A                               |
| Conductive              | N/A                               |
| Anti                    | N/A                               |
| Weight                  | 0.4kgs                            |
| Standard                | ISO22883                          |

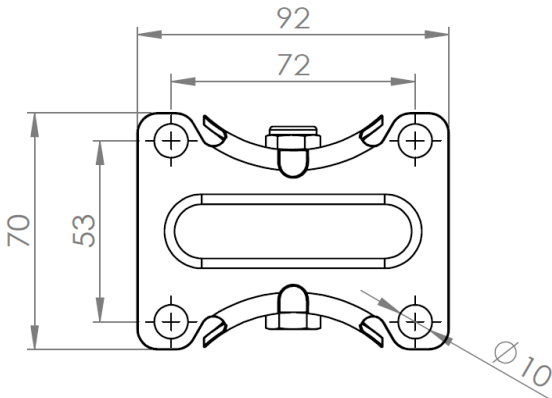
Advantages at a glance

|                            |           |
|----------------------------|-----------|
| Rolling Resistance         | ● ● ● ● ○ |
| Operating Noise            | ● ● ● ● ○ |
| Floor Surface Preservation | ● ● ● ● ● |

Dimensions



Mounting



Drawings are for reference only and may differ from the product.

\* For any deviation between metric and imperial spec, please refer to the metric spec.