

1129 Series

PU wheel wheel diameter × wheel width 75 x 32mm

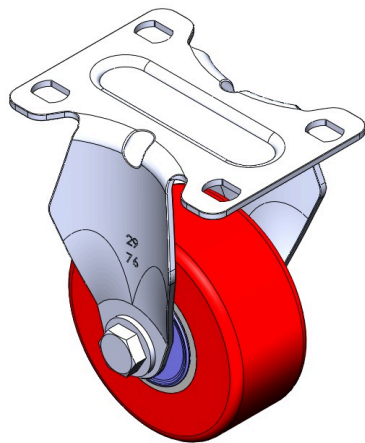
EAN

TW-4112903001013

Fixed casters, one-piece stamped tripod
Surface plating, bottom plate mounting device
Cast iron wheel core, high quality polyurethane wheel surface
Milled red, wheel bearings - precision balls.

Wheel surface: Made of high quality polyurethane
Wheel core: iron core/cast iron core

Product descriptions are for reference only. The actual product shall prevail.



Picture may differ from original product

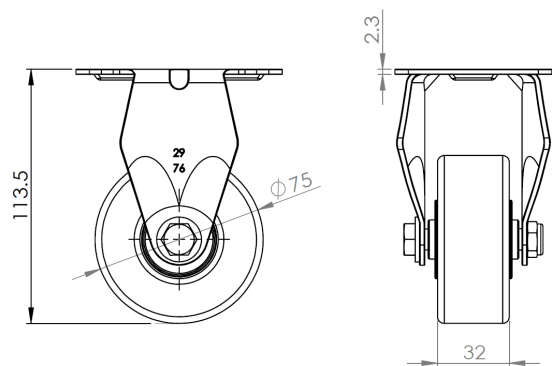
Technical Data

<input checked="" type="radio"/> Metric <input type="radio"/> Imperial	
Wheel Diameter	75mm
Wheel Width	32mm
Wheel Bearing	wheel equipped with ball bearings
Plate size	92 x 70mm
Base plate hole spacing	75 x 45mm
Plate hole	12 x 9mm
Overall height	113.5mm
Hardness of tread	93±5° Shore A
Load capacity (dynamic)	180kgs
Load capacity (static)	270kgs
Temperature	-30°C to +70°C
Stand Style	fixed
Stainless steel	N/A
Conductive	N/A
Anti	N/A
Weight	0.4kgs
Standard	ISO22883

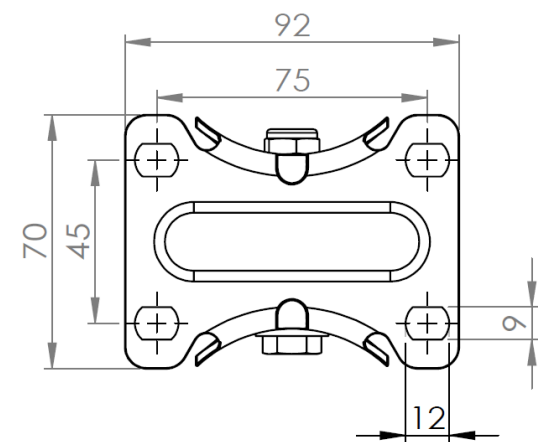
Advantages at a glance

Rolling Resistance	● ● ● ○ ○
Operating Noise	● ● ● ● ○
Floor Surface Preservation	● ● ● ● ○

Dimensions



Mounting



Drawings are for reference only and may differ from the product.

* For any deviation between metric and imperial spec, please refer to the metric spec.