

1129 Series

Milling wheel wheel diameter × wheel width 75 x 30mm

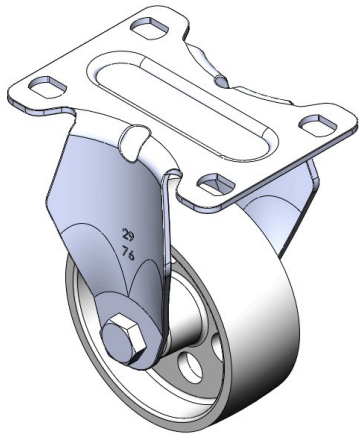
EAN

TW-4112903001015

Fixed casters, one-piece stamped tripod  
Surface plating, bottom plate mounting device  
Cast iron wheel core and wheel surface  
Black, wheels - mid-tube type.

Wheel surface: cast iron  
Wheel core: cast iron

Product descriptions are for reference only. The actual product shall prevail.



Picture may differ from original product

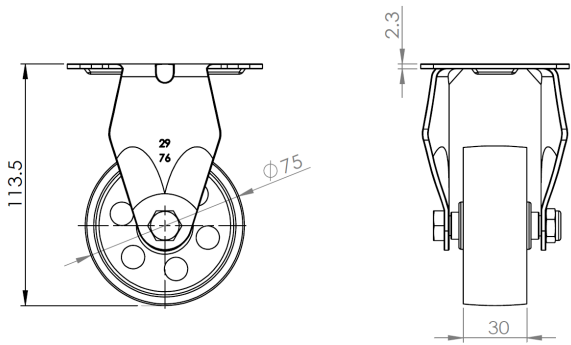
Technical Data

<input checked="" type="radio"/> Metric <input type="radio"/> Imperial	
Wheel Diameter	75mm
Wheel Width	30mm
Wheel Bearing	wheels with a central tube
Plate size	92 x 70mm
Base plate hole spacing	75 x 45mm
Plate hole	12 x 9mm
Overall height	113.5mm
Load capacity (dynamic)	70kgs
Load capacity (static)	105kgs
Temperature	-20°C to +250°C
Stand Style	fixed
Stainless steel	N/A
Conductive	N/A
Anti	N/A
Weight	0.4kgs
Standard	ISO22883

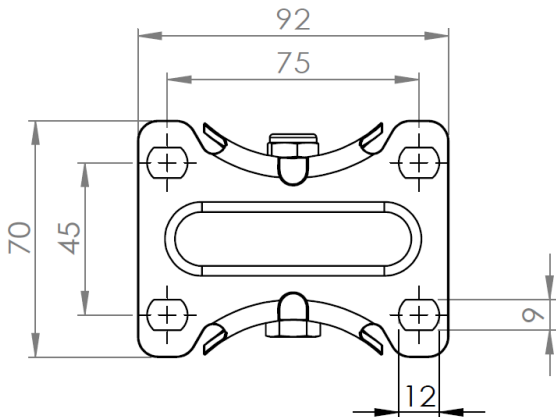
Advantages at a glance

Rolling Resistance	● ● ● ● ●
Operating Noise	● ○ ○ ○ ○
Floor Surface Preservation	● ○ ○ ○ ○

Dimensions



Mounting



Drawings are for reference only and may differ from the product.

\* For any deviation between metric and imperial spec, please refer to the metric spec.