

1129 Series

WMRC wheel wheel diameter × wheel width 75 x 31mm

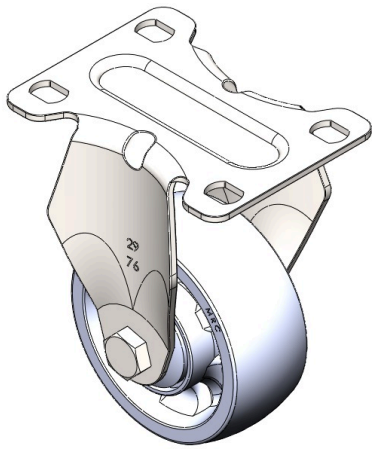
EAN

TW-4112903001016

Fixed casters, one-piece stamped tripod
Surface plating, bottom plate mounting device
Reinforced thermoplastic plastic wheel core and wheel surface
Wheel bearings—precision balls.

Wheel surface: thermoplastic (PA6)
Wheel core: thermoplastic (PA6)

Product descriptions are for reference only. The actual product shall prevail.



Picture may differ from original product

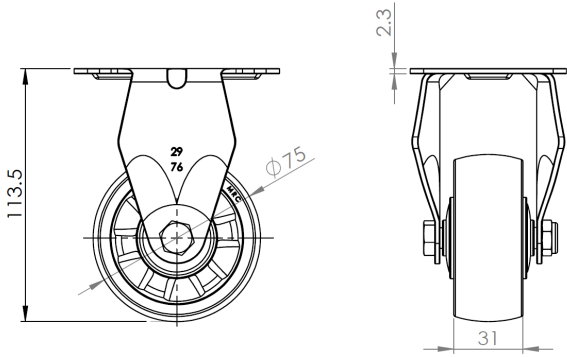
Technical Data

<input checked="" type="radio"/> Metric <input type="radio"/> Imperial	
Wheel Diameter	75mm
Wheel Width	31mm
Wheel Bearing	wheel equipped with ball bearings
Plate size	92 x 70mm
Base plate hole spacing	75 x 45mm
Plate hole	12 x 9mm
Overall height	113.5mm
Hardness of tread	70±5° Shore D
Load capacity (dynamic)	120kgs
Load capacity (static)	180kgs
Temperature	-25°C to +80°C
Stand Style	fixed
Stainless steel	N/A
Conductive	N/A
Anti	N/A
Weight	0.4kgs
Standard	ISO22883

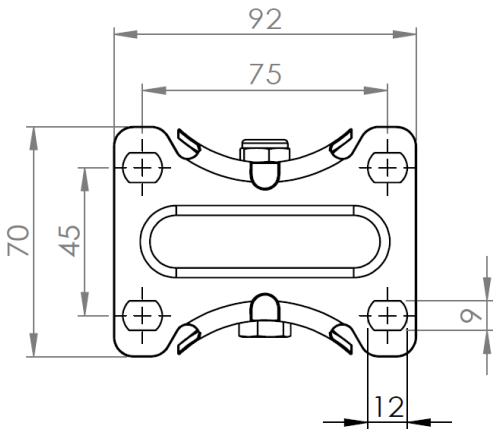
Advantages at a glance

Rolling Resistance	● ● ● ● ●
Operating Noise	● ● ○ ○ ○
Floor Surface Preservation	● ● ○ ○ ○

Dimensions



Mounting



Drawings are for reference only and may differ from the product.

* For any deviation between metric and imperial spec, please refer to the metric spec.