

1129 Series

Full wheel diameter × wheel width 75 x 31mm

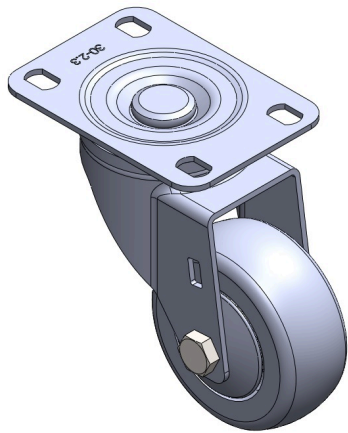
EAN

TW-4112903002007

Movable casters, riveted base and stamped tripod
Surface plating, bottom plate mounting device
Impact-resistant polypropylene wheel core, thermoplastic elastomer (TPR) wheel surface
Dark grey, wheel bearing - precision ball.

Wheel surface: thermoplastic rubber elastomer (TPR)
Wheel core: Made of high-quality impact-resistant polypropylene

Product descriptions are for reference only. The actual product shall prevail.



Picture may differ from original product

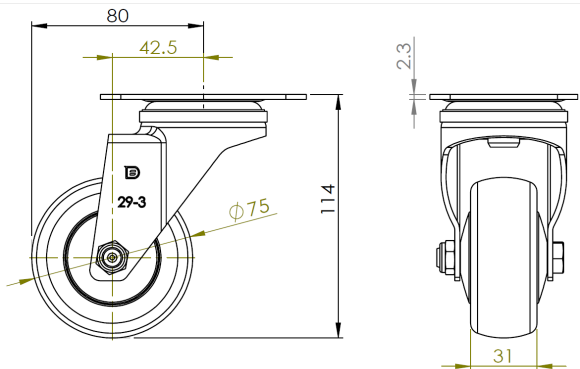
Technical Data

<input checked="" type="radio"/> Metric <input type="radio"/> Imperial	
Wheel Diameter	75mm
Wheel Width	31mm
Wheel Bearing	wheel equipped with ball bearings
Plate size	96 x 69mm
Base plate hole spacing	75 x 45mm 高級孔
Plate hole	13 x 9mm
Offset	42.5mm
Swivel Interference	160mm
Overall height	114mm
Swivel Radius	80mm
Hardness of tread	72±5° Shore A
Load capacity (dynamic)	90kgs
Load capacity (static)	135kgs
Temperature	-20°C to +60°C
Stand Style	activity
Stainless steel	N/A
Conductive	N/A
Anti	N/A
Weight	0.6kgs
Standard	ISO22883

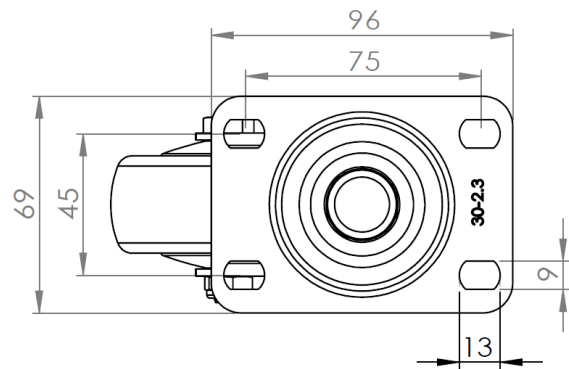
Advantages at a glance

Rolling Resistance	● ● ● ● ●
Operating Noise	● ● ● ● ●
Floor Surface Preservation	● ● ● ● ●

Dimensions



Mounting



Drawings are for reference only and may differ from the product.

* For any deviation between metric and imperial spec, please refer to the metric spec.