



1101 D Type Pneumatic Caster

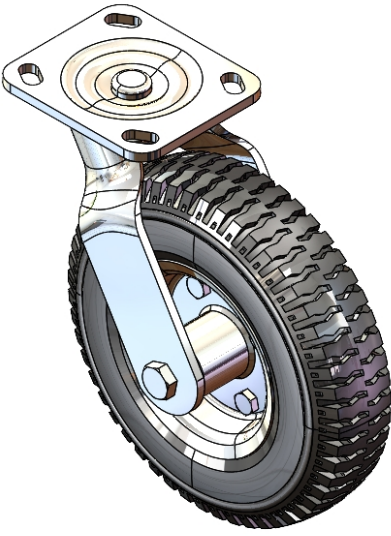
Pneumatic (Black) Wheel Diameter × Wheel Width 216 x 65mm

YJ-11040800012046

Swivel Caster, Top Plate with Riveted Stamping Fork and 85 x 70mm (3-3/8" x 2-3/4") Bolt Hole Spacing. Chrome-Plated finish, Top Plate (6T) Mounting Type system. Cast Iron Wheel Center, High-Quality Resilient Rubber Wheel Tread, Wheel Tread provides Compression Resistance resistance and Abrasion Resistance. Black, Bearing—Ball Bearing.

Wheel Tread: high-quality elastic rubber
Wheel Center: iron core

Drawings are for reference only and may differ from the product



Picture may differ from original product

Technical Data

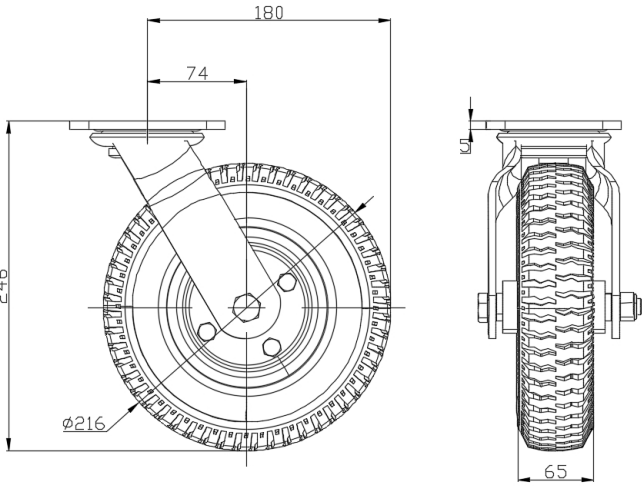
☒ Imperial ☐ Metric

Wheel Diameter	216mm
Wheel Width	2-5/8
Wheel Bearing	Wheels With Ball Bearings
Plate Size	4-9/16 " x 4 "
Bolt Hole Spacing	3-3/8 " x 2-3/4 "
Plate Hole	13/16 " x 3/8 "
Offset	3 "
Swivel Interference	14 "
Overall Height	9-13/16 "
Swivel Radius	7-1/8 "
Hardness Of Tread	75±5° Shore A
Load Capacity (Dynamic)	220lbs
Load Capacity (Static)	331lbs
Temperature	-4°F to +158°F
Fork Type	Swivel Caster
Stainless	N/A
Electrical Conductivity	N/A
Anti-Static	N/A
Weight	6.6lbs
Standard	ISO22883

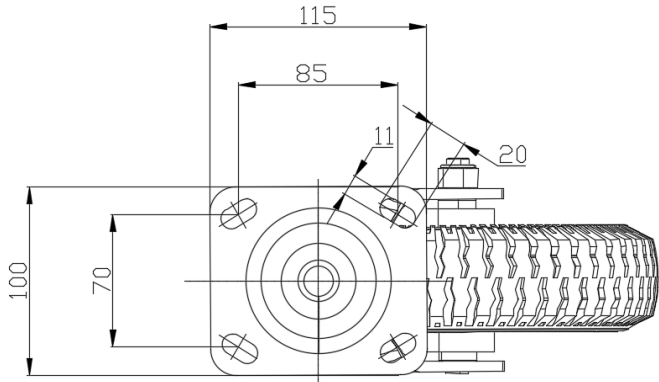
Advantages at a glance

Rolling Resistance	● ● ● ● ○
Operating Noise	● ● ● ● ●
Floor Surface Preservation	● ● ● ● ●

Dimensions



Mounting



* For any deviation between metric and imperial spec, please refer to the metric spec.