



1101 D Type Pneumatic Caster

Pneumatic (Black) Wheel Diameter × Wheel Width 216 x 65mm

YJ-11040800012093

Swivel Caster, Top Plate with Riveted Stamping bracket and D-shaped hole.  
Zine-Plated, Top Plate (6T) Mounting Type system.  
Cast Iron Wheel Center, High-Quality Resilient Rubber Wheel Tread, Wheel Tread provides Compression Resistance resistance and Abrasion Resistance.  
Black, Bearing—Ball Bearings.

Wheel surface: high-quality elastic rubber  
Wheel Center: iron core

Drawings are for reference only and may differ from the product



Picture may differ from original product

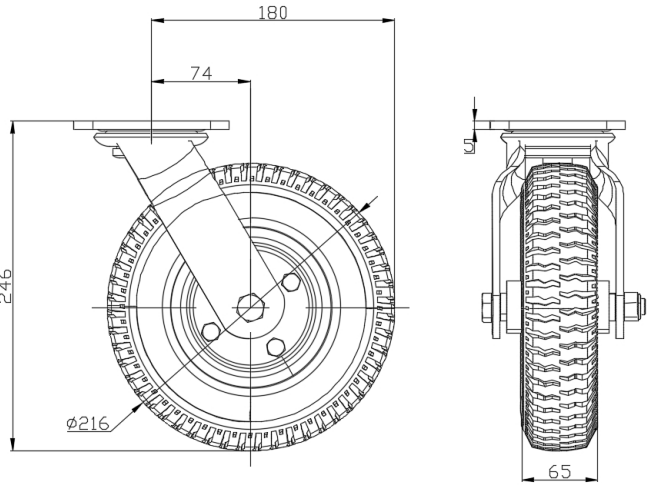
Technical Data

<input checked="" type="radio"/> Metric <input type="radio"/> Imperial	
Wheel Diameter	216mm
Wheel Width	65mm
Wheel Bearing	Wheels With Ball Bearings
Plate Size	115 x 100mm
Bolt Hole Spacing	85 x 70mm
Plate Hole	20 x 11mm
Offset	74mm
Swivel Interference	360mm
Overall Height	246mm
Swivel Radius	180mm
Hardness Of Tread	75±5° Shore A
Load Capacity (Dynamic)	100kgs
Load Capacity (Static)	150kgs
Temperature	-20°C to +70°C
Fork Type	Swivel Caster
Stainless	N/A
Electrical Conductivity	N/A
Anti-Static	N/A
Weight	3.01kgs
Standard	ISO22883

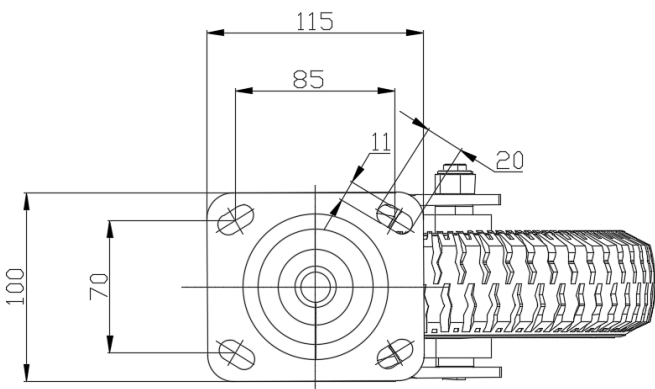
Advantages at a glance

Rolling Resistance	● ● ● ● ○
Operating Noise	● ● ● ● ●
Floor Surface Preservation	● ● ● ● ●

Dimensions



Mounting



\* For any deviation between metric and imperial spec, please refer to the metric spec.