

1101 D Type Pneumatic Caster

Solid Rubber (Black) Wheel Diameter × Wheel Width 250 x 74mm

YJ-11041000022011

Swivel Caster, Fork plate with Riveted Stamping bracket and D-shaped hole. Zine-Plated, Fork plate (6T) Mounting Type system. Cast Iron wheel center, high-quality Resilient Rubber tread, Wheel tread provides Compression Resistance resistance and Abrasion Resistance. Black, Bearing—Ball Bearing.

Wheel surface: high-quality elastic rubber  
Wheel Center: iron core

Drawings are for reference only and may differ from the product



Picture may differ from original product

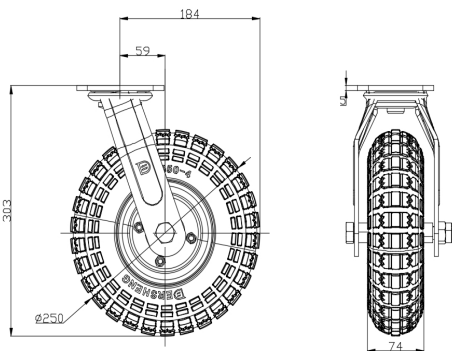
Technical Data

<input checked="" type="radio"/> Metric <input type="radio"/> Imperial	
Wheel Diameter	250mm
Wheel Width	74mm
Wheel Bearing	Wheels With Ball Bearings
Plate Size	115 x 100mm
Bolt Hole Spacing	85 x 70mm
Plate Hole	20 x 11mm
Offset	59mm
Swivel Interference	368mm
Overall Height	303mm
Swivel Radius	184mm
Hardness Of Tread	75±5° Shore A
Load Capacity (Dynamic)	125kgs
Load Capacity (Static)	178.5kgs
Temperature	-20°C to +70°C
Fork Type	Swivel Caster
Stainless	N/A
Electrical Conductivity	N/A
Anti-Static	N/A
Weight	6.66kgs
Standard	ISO22883

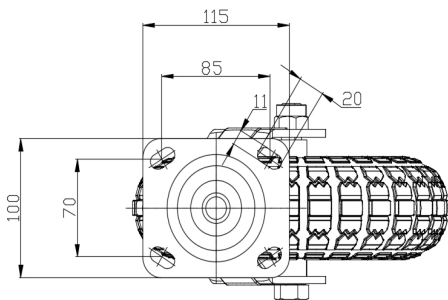
Advantages at a glance

Rolling Resistance	● ● ● ● ○
Operating Noise	● ● ● ● ●
Floor Surface Preservation	● ● ● ● ●

Dimensions



Mounting



Drawings are for reference only and may differ from the product.

\* For any deviation between metric and imperial spec, please refer to the metric spec.