



1101 D Type Pneumatic Caster

Solid Rubber (Black) Wheel Diameter × Wheel Width 250 x 74mm

YJ-11041000022011

Swivel Caster, Top Plate with Riveted Stamping bracket and D-shaped hole. Zine-Plated, Top Plate (6T) Mounting Type system. Cast Iron Wheel Center, High-Quality Resilient Rubber tread, Wheel Tread provides Compression Resistance resistance and Abrasion Resistance. Black, Bearing—Ball Bearing.

Wheel surface: high-quality elastic rubber
Wheel Center: iron core

Drawings are for reference only and may differ from the product



Picture may differ from original product

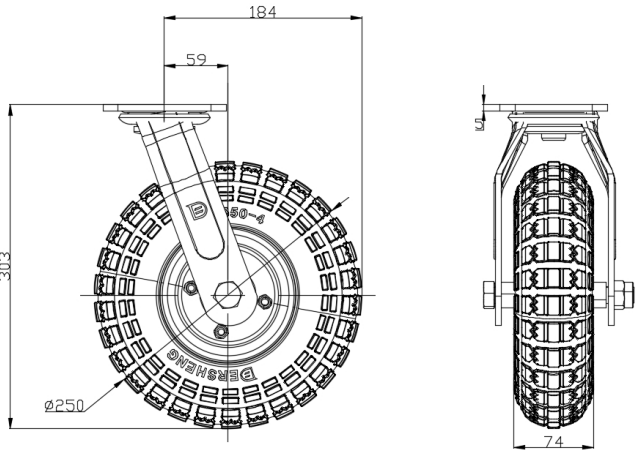
Technical Data

<input checked="" type="radio"/> Imperial <input type="radio"/> Metric	
Wheel Diameter	10 "
Wheel Width	3 "
Wheel Bearing	Wheels With Ball Bearings
Plate Size	4-9/16 " x 4 "
Bolt Hole Spacing	3-3/8 " x 2-3/4 "
Plate Hole	13/16 " x 3/8 "
Offset	2-3/8 "
Swivel Interference	14-1/2 "
Overall Height	12 "
Swivel Radius	7-3/8 "
Hardness Of Tread	75±5° Shore A
Load Capacity (Dynamic)	276lbs
Load Capacity (Static)	394lbs
Temperature	-4°F to +158°F
Fork Type	Swivel Caster
Stainless	N/A
Electrical Conductivity	N/A
Anti-Static	N/A
Weight	14.7lbs
Standard	ISO22883

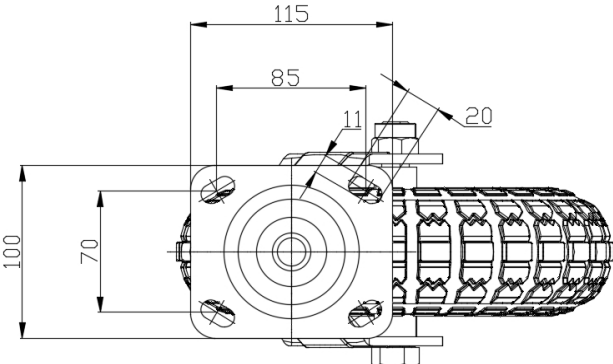
Advantages at a glance

Rolling Resistance	● ● ● ● ○
Operating Noise	● ● ● ● ●
Floor Surface Preservation	● ● ● ● ●

Dimensions



Mounting



* For any deviation between metric and imperial spec, please refer to the metric spec.