



1105 E-Type Series

WMRC (Transparent) Wheel Diameter × Wheel Width 75 x 31mm

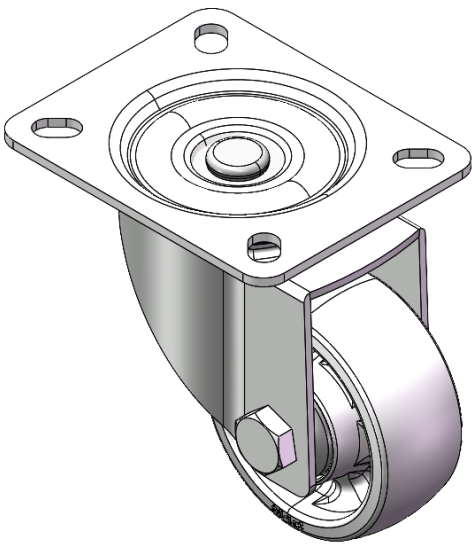
EAN

YJ-11050300072023

Swivel Casters, Riveted and Stamping Top Plate—high-grade perforated Fork Zine-Plated surface, Mounting Type - Top Plate device Reinforced thermoplastic Wheel Center and Wheel Tread Bearings—Ball Bearings.

Wheel surface: Thermoplastic (PA6)
Wheel Center: Thermoplastic (PA6)

Drawings are for reference only and may differ from the product



Picture may differ from original product

Technical Data

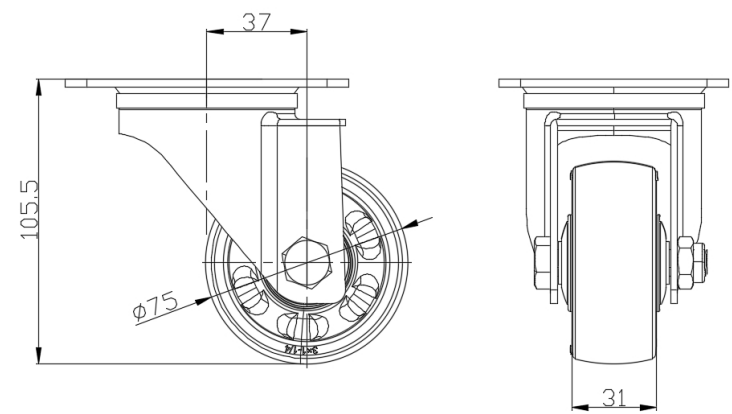
☒ Metric ☐ Imperial

| | |
|-------------------------|---------------------------|
| Wheel Diameter | 75mm |
| Wheel Width | 31mm |
| Wheel Bearing | Wheels With Ball Bearings |
| Plate Size | 105 x 85mm |
| Bolt Hole Spacing | 80 x 60mm |
| Plate Hole | 14 x 9mm |
| Offset | 37mm |
| Swivel Interference | 149mm |
| Overall Height | 105.5mm |
| Swivel Radius | 74.5mm |
| Hardness Of Tread | 75±5° Shore D |
| Load Capacity (Dynamic) | 160kgs |
| Load Capacity (Static) | 240kgs |
| Temperature | -20°C to +80°C |
| Fork Type | Swivel Caster |
| Stainless | N/A |
| Electrical Conductivity | N/A |
| Anti-Static | N/A |
| Weight | 0.60kgs |
| Standard | ISO22883 |

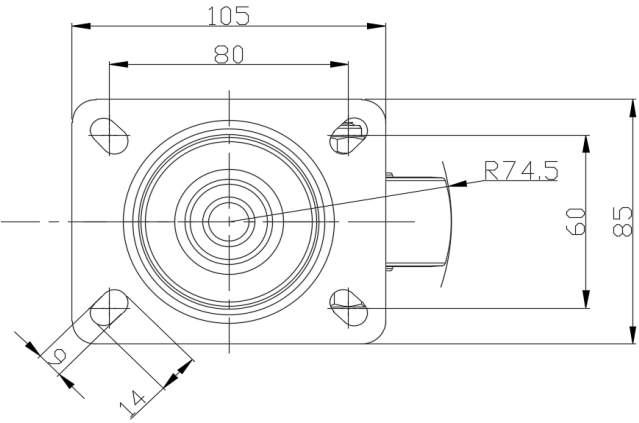
Advantages at a glance

| | |
|----------------------------|-----------|
| Rolling Resistance | ● ● ● ● ● |
| Operating Noise | ● ● ○ ○ ○ |
| Floor Surface Preservation | ● ● ○ ○ ○ |

Dimensions



Mounting



* For any deviation between metric and imperial spec, please refer to the metric spec.