



1105 E-Type Series

WMRC (Transparent) Wheel Diameter × Wheel Width 75 x 31mm

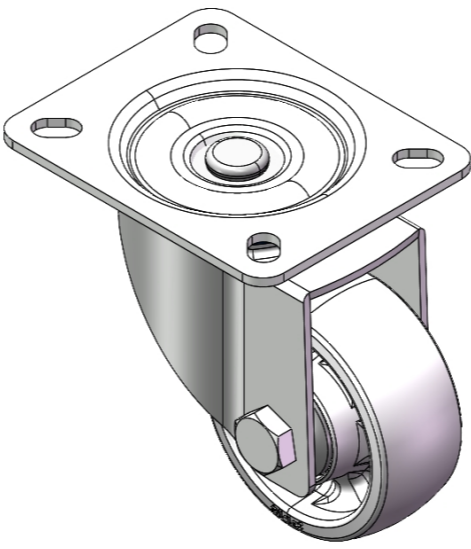
EAN

YJ-11050300072023

Swivel Casters, Riveted and Stamping Top Plate—high-grade perforated Fork Zine-Plated surface, Mounting Type - Top Plate device Reinforced thermoplastic Wheel Center and Wheel Tread Bearings—Ball Bearings.

Wheel surface: Thermoplastic (PA6)
Wheel Center: Thermoplastic (PA6)

Drawings are for reference only and may differ from the product



Picture may differ from original product

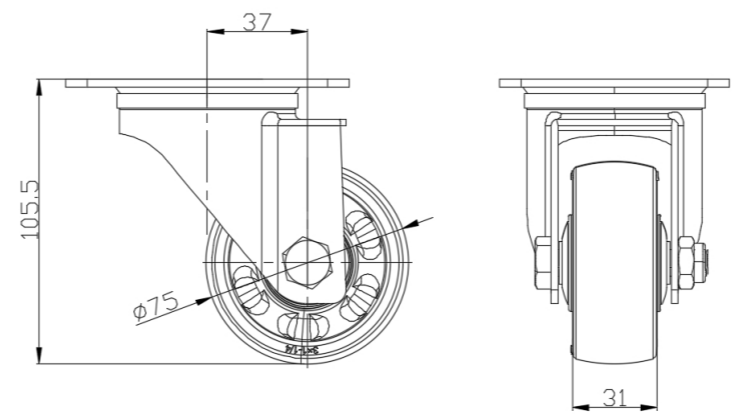
Technical Data

<input checked="" type="radio"/> Imperial <input type="radio"/> Metric	
Wheel Diameter	3 "
Wheel Width	1-1/4 "
Wheel Bearing	Wheels With Ball Bearings
Plate Size	4-3/16 " x 3-7/16 "
Bolt Hole Spacing	3-3/16 " x 2-7/16 "
Plate Hole	9/16 " x 23/64 "
Offset	1-1/2 "
Swivel Interference	6 "
Overall Height	4-3/16 "
Swivel Radius	3 "
Hardness Of Tread	75±5° Shore D
Load Capacity (Dynamic)	353lbs
Load Capacity (Static)	529lbs
Temperature	-4°F to +176°F
Fork Type	Swivel Caster
Stainless	N/A
Electrical Conductivity	N/A
Anti-Static	N/A
Weight	1.3lbs
Standard	ISO22883

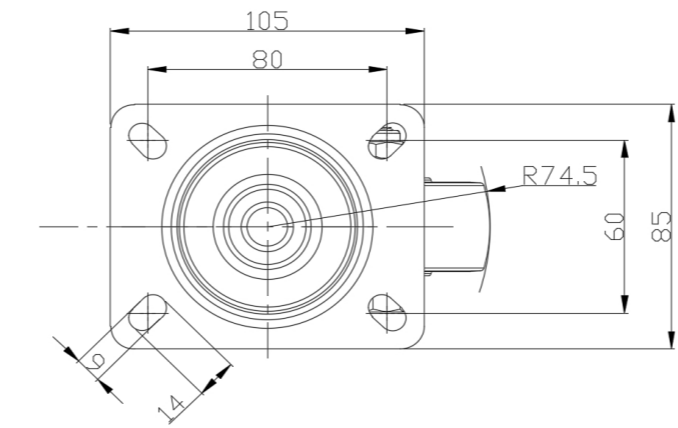
Advantages at a glance

Rolling Resistance	● ● ● ● ●
Operating Noise	● ● ○ ○ ○
Floor Surface Preservation	● ● ○ ○ ○

Dimensions



Mounting



* For any deviation between metric and imperial spec, please refer to the metric spec.