

1109 Medium Duty/Low Profile Business Machine Caster Series



MRC (black) Wheel Diameter × Wheel Width 50 x 45mm

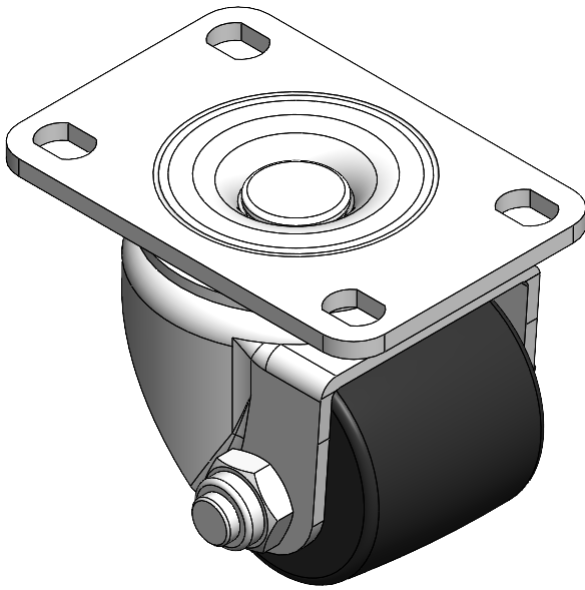
EAN

YJ-11090200052033

Swivel Caster with Riveted Fork and Stamping Fork – 75 x 45 mm (3" x 1-3/4") Bolt Hole Spacing Zine-Plated, Fork-mount Mounting Type Reinforced Polypropylene and tread Black, Bearing – Ball Bearing

Wheel Tread: Thermoplastic (PA6)  
Wheel Center: thermoplastic (PA6)

Drawings are for reference only and may differ from the product



Picture may differ from original product

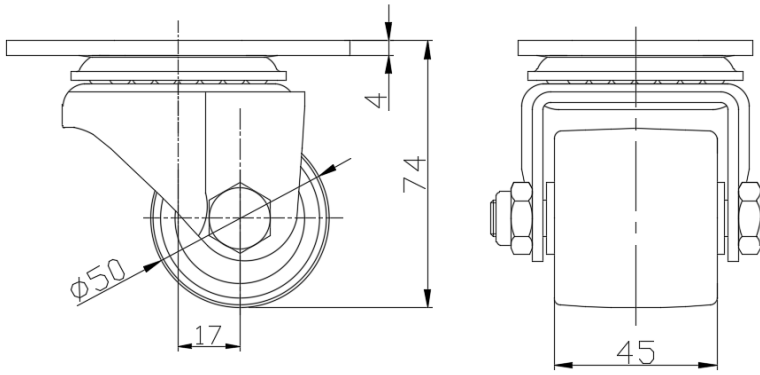
Technical Data

|  |                           |
|--|---------------------------|
| <input checked="" type="radio"/> Metric <input type="radio"/> Imperial |                           |
| Wheel Diameter   | 50mm                      |
| Wheel Width  | 45mm                      |
| Wheel Bearing  | Wheels With Ball Bearings |
| Plate Size   | 95 x 65mm                 |
| Bolt Hole Spacing  | 75 x 45mm                 |
| Plate Hole   | 12 x 9mm                  |
| Offset   | 17mm                      |
| Swivel Interference  | 108mm                     |
| Overall Height   | 74mm                      |
| Swivel Radius  | 54mm                      |
| Hardness Of Tread  | 75±5° Shore D             |
| Load Capacity (Dynamic)  | 200kgs                    |
| Load Capacity (Static)   | 300kgs                    |
| Temperature  | -20°C to +80°C            |
| Fork Type  | Swivel Caster             |
| Stainless  | N/A                       |
| Electrical Conductivity  | N/A                       |
| Anti-Static  | N/A                       |
| Weight   | 0.63kgs                   |
| Standard   | ISO22883                  |

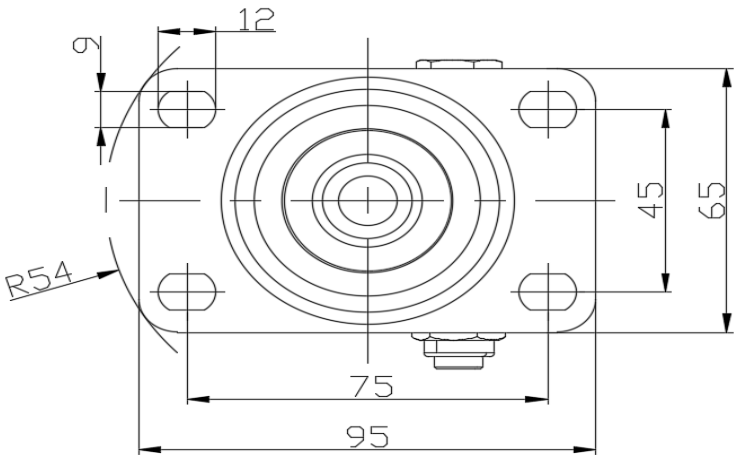
Advantages at a glance

|                            |           |
|----------------------------|-----------|
| Rolling Resistance         | ● ● ● ● ● |
| Operating Noise            | ● ● ○ ○ ○ |
| Floor Surface Preservation | ● ● ○ ○ ○ |

Dimensions



Mounting



\* For any deviation between metric and imperial spec, please refer to the metric spec.