

1109 Medium Duty/Low Profile Business Machine Caster Series



MRC (black) Wheel Diameter × Wheel Width 50 × 25 mm

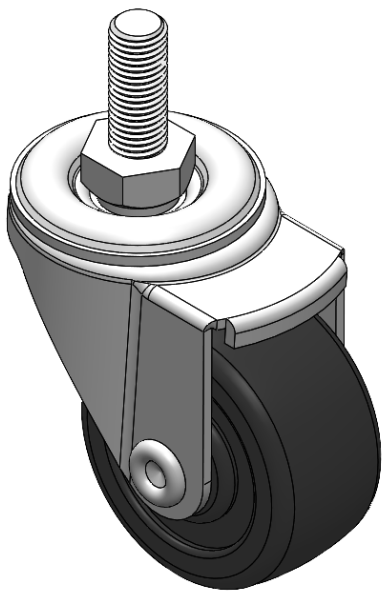
EAN

YJ-11090200055083

Swivel Caster, thread-Riveted Stamping Fork—M10-P1.5 Zine-Plated, Mounting Type - Threaded Stem Thermoplastic core and tread Black, Bearing—Ball Bearing.

Wheel Tread: Thermoplastic (PA6)
Wheel Center: thermoplastic (PA6)

Drawings are for reference only and may differ from the product



Picture may differ from original product

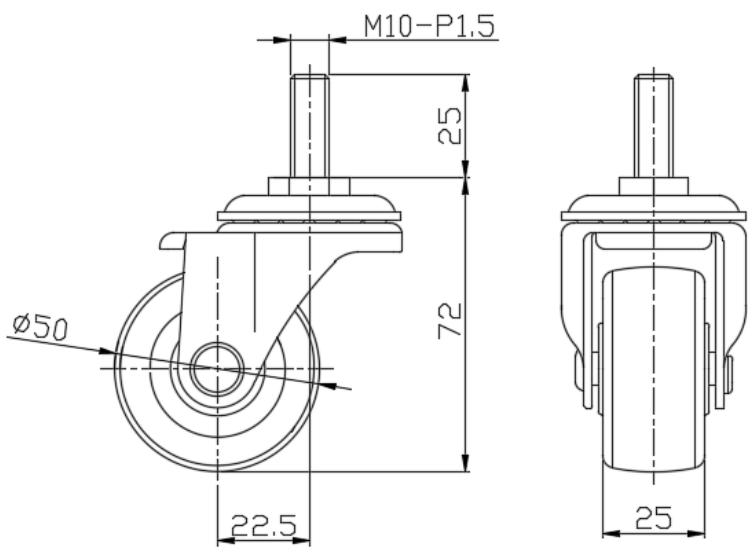
Technical Data

| | |
|--|---------------------------|
| <input checked="" type="radio"/> Imperial <input type="radio"/> Metric | |
| Wheel Diameter | 2 " |
| Wheel Width | 1 " |
| Wheel Bearing | Wheels With Ball Bearings |
| Threaded Stem | M10-P1.5 |
| Threaded Size | 1 " |
| Offset | 15/16 " |
| Swivel Interference | 3-3/4 " |
| Overall Height | 2-7/8 " |
| Swivel Radius | 1-7/8 " |
| Hardness Of Tread | 75±5° Shore D |
| Load Capacity (Dynamic) | 154lbs |
| Load Capacity (Static) | 231lbs |
| Temperature | -4°F to +176°F |
| Fork Type | Swivel Caster |
| Stainless | N/A |
| Electrical Conductivity | N/A |
| Anti-Static | N/A |
| Weight | 0.5lbs |
| Standard | ISO22883 |

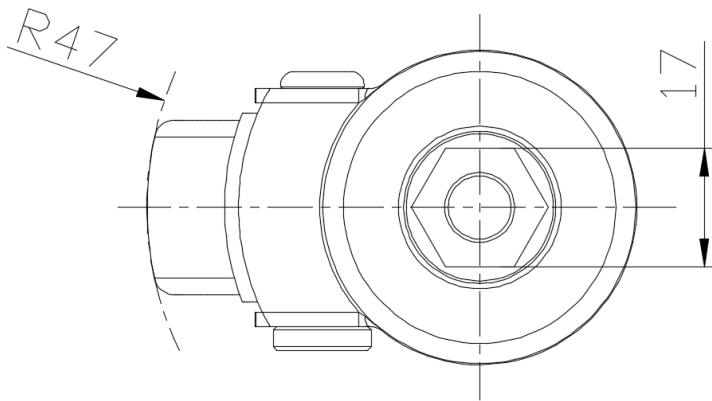
Advantages at a glance

| | |
|----------------------------|-----------|
| Rolling Resistance | ● ● ● ● ● |
| Operating Noise | ● ● ○ ○ ○ |
| Floor Surface Preservation | ● ● ○ ○ ○ |

Dimensions



Mounting



* For any deviation between metric and imperial spec, please refer to the metric spec.