

1109 Medium Duty/Low Profile Business Machine Caster Series



MRC (black) Wheel Diameter × Wheel Width 50 × 25 mm

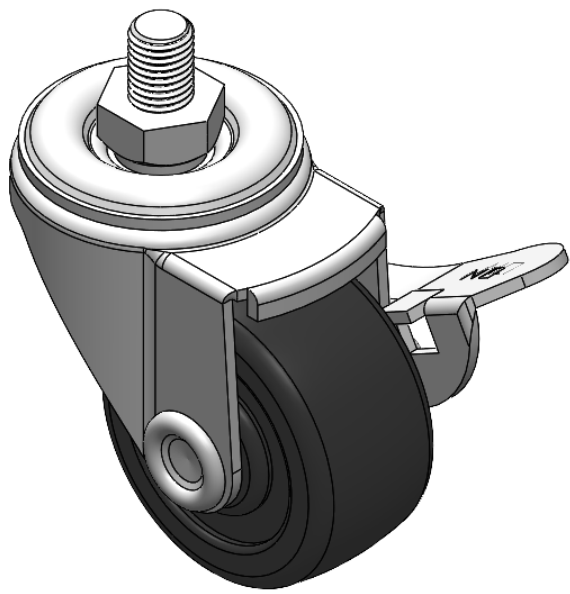
EAN

YJ-11090200056063

Casters with Side Brakes and With locking system. Threaded Stem Riveted Pressed Fork – 3/8"-16 thread.
Zine-Plated, Mounting Type - Threaded Stem.
Reinforced Polypropylene Wheel Center and Wheel Tread.
Black. Bearings – Ball Bearings.

Wheel surface: Thermoplastic (PA6)
Wheel Center: Thermoplastic (PA6)

Drawings are for reference only and may differ from the product



Picture may differ from original product

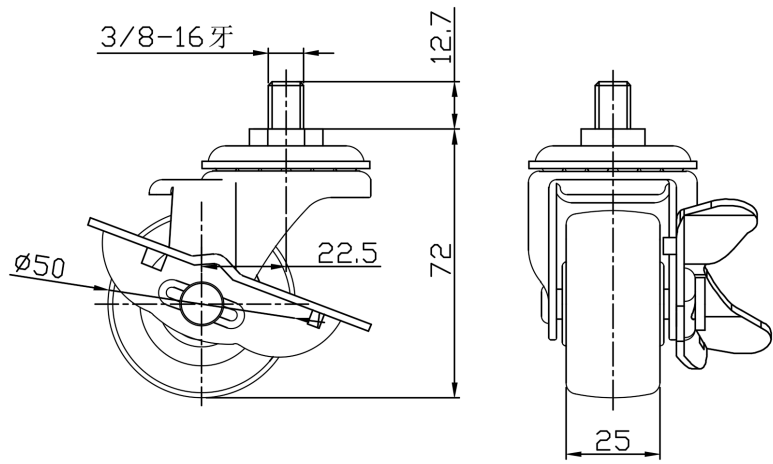
Technical Data

| | |
|--|-------------------------------|
| <input checked="" type="radio"/> Metric <input type="radio"/> Imperial | |
| Wheel Diameter | 50mm |
| Wheel Width | 25mm |
| Wheel Bearing | Wheels With Ball Bearings |
| Threaded Stem | 3/8 " -16牙 |
| Threaded Size | 12.7mm |
| Offset | 22.5mm |
| Swivel Interference | 128mm |
| Overall Height | 72mm |
| Swivel Radius | 64mm |
| Hardness Of Tread | 75±5° Shore D |
| Load Capacity (Dynamic) | 70kgs |
| Load Capacity (Static) | 105kgs |
| Temperature | -20°C to +80°C |
| Fork Type | Swivel Caster With Side Brake |
| Stainless | N/A |
| Electrical Conductivity | N/A |
| Anti-Static | N/A |
| Weight | 0.25kgs |
| Standard | ISO22883 |

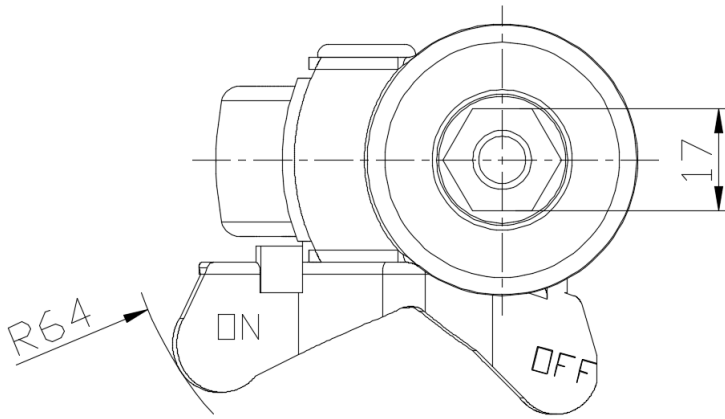
Advantages at a glance

| | |
|----------------------------|-----------|
| Rolling Resistance | ● ● ● ● ● |
| Operating Noise | ● ● ○ ○ ○ |
| Floor Surface Preservation | ● ● ○ ○ ○ |

Dimensions



Mounting



* For any deviation between metric and imperial spec, please refer to the metric spec.