

Product Data Sheet

1165-6 AMR/AGV- 6 Pressed Steel Caster - Dual Wheel Series (Medium/Light Duty)



ZQPU Anti-static Wheel (Milled Black) Wheel Diameter × Wheel Width 50 × 20 (41.5) mm

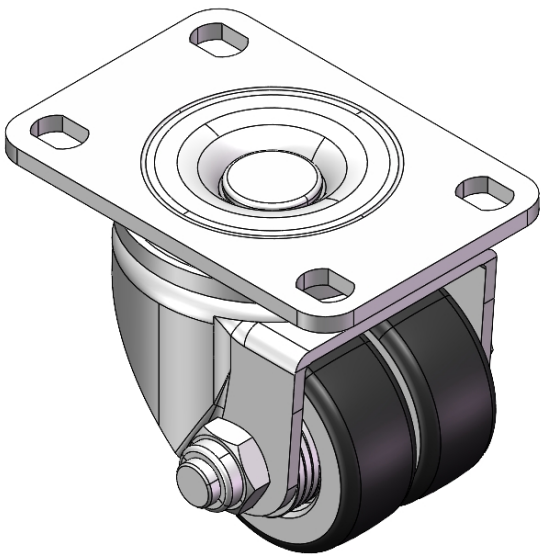
EAN

YJ-11090200802083

Swivel Caster with Riveted Fork and Stamping bracket – 75 x 45 mm (3" x 1-3/4") Bolt Hole Spacing
Zine-Plated, Mounting Type - Top Plate
Cast Iron core, High Quality Polyurethane Wheel Tread
Black, Bearing – Ball Bearings

Wheel tread: high quality polyurethane
Wheel Center: cast iron core

Drawings are for reference only and may differ from the product



Picture may differ from original product

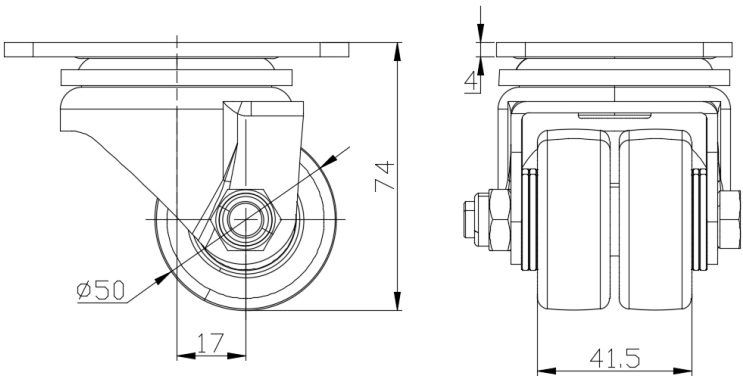
Technical Data

<input checked="" type="radio"/> Metric <input type="radio"/> Imperial	
Wheel Diameter	50mm
Wheel Width	41.5mm
Wheel Bearing	Wheels With Ball Bearings
Plate Size	95 x 65mm
Bolt Hole Spacing	75 x 45mm
Plate Hole	12 x 9mm
Offset	17mm
Swivel Interference	108mm
Overall Height	74mm
Swivel Radius	54mm
Hardness Of Tread	87±5° Shore A
Load Capacity (Dynamic)	300kgs
Load Capacity (Static)	450kgs
Temperature	-20°C to +70°C
Fork Type	Swivel Caster
Stainless	N/A
Electrical Conductivity	N/A
Anti-Static	Y 抗靜電値在10^6/～10^9/Ω。
Weight	0.86kgs
Standard	ISO22883

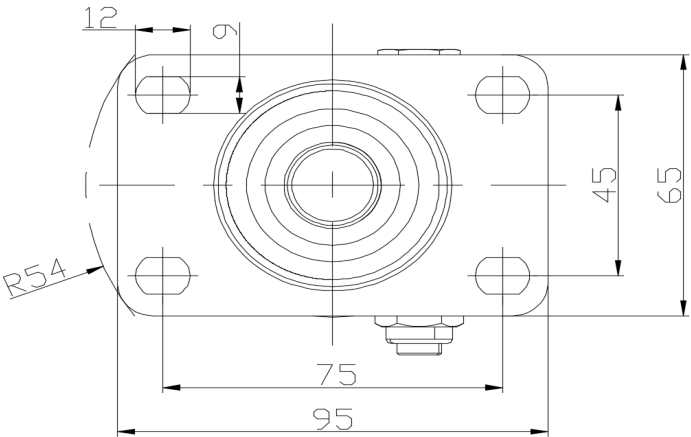
Advantages at a glance

Rolling Resistance	● ● ● ● ●
Operating Noise	● ● ● ● ●
Floor Surface Preservation	● ● ● ● ●

Dimensions



Mounting



* For any deviation between metric and imperial spec, please refer to the metric spec.