

1109 Medium Duty/Low Profile Business Machine Caster Series



ZQPU (Milled Blue) Wheel Diameter × Wheel Width 50× 20 (41.5) mm

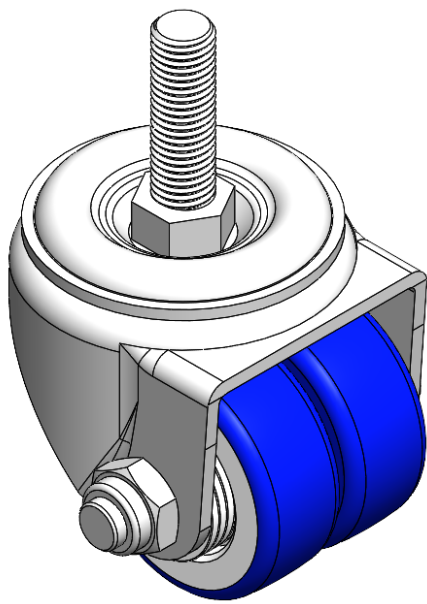
EAN

YJ-11090200805023

Swivel Caster with Riveted Stamping Fork—3/8"-16"  
Zine-Plated, Mounting Type - Threaded Stem  
Cast Iron core, High Quality Polyurethane Wheel Tread  
Blue color, Ball Bearings.

Wheel surface: high quality polyurethane  
Wheel Center: cast iron core

Drawings are for reference only and may differ from the product



Picture may differ from original product

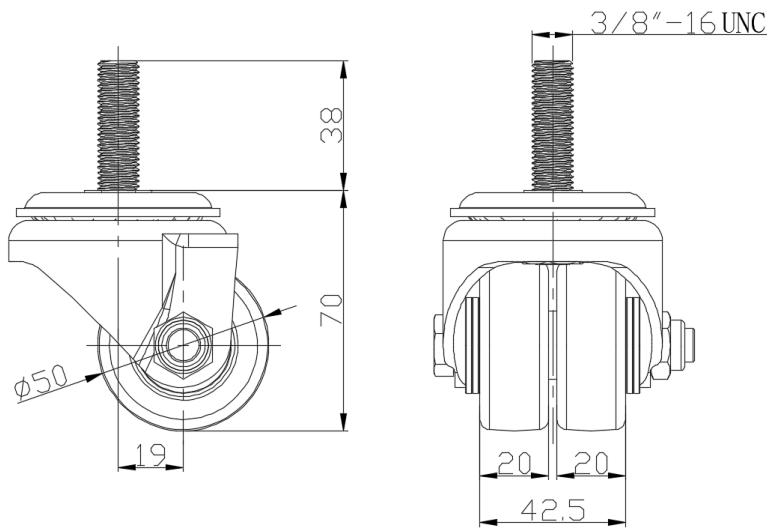
Technical Data

<input checked="" type="radio"/> Metric <input type="radio"/> Imperial	
Wheel Diameter	50mm
Wheel Width	42.5mm
Wheel Bearing	Wheels With Ball Bearings
Threaded Stem	3/8 " -16
Threaded Size	38mm
Offset	19mm
Swivel Interference	94mm
Overall Height	70mm
Swivel Radius	47mm
Hardness Of Tread	87±5° Shore A
Load Capacity (Dynamic)	100kgs
Load Capacity (Static)	150kgs
Temperature	-20°C to +70°C
Fork Type	Swivel Caster
Stainless	N/A
Electrical Conductivity	N/A
Anti-Static	N/A
Weight	0.95kgs
Standard	ISO22883

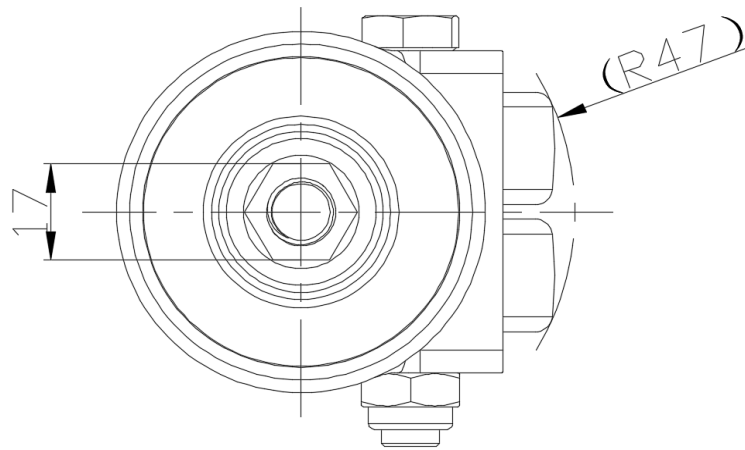
Advantages at a glance

Rolling Resistance	● ● ● ● ●
Operating Noise	● ● ● ● ●
Floor Surface Preservation	● ● ● ● ●

Dimensions



Mounting



\* For any deviation between metric and imperial spec, please refer to the metric spec.