

1109 Medium Duty/Low Profile Business Machine Caster Series



ZQPU (Milled Blue) Wheel Diameter × Wheel Width 50× 20 (41.5) mm

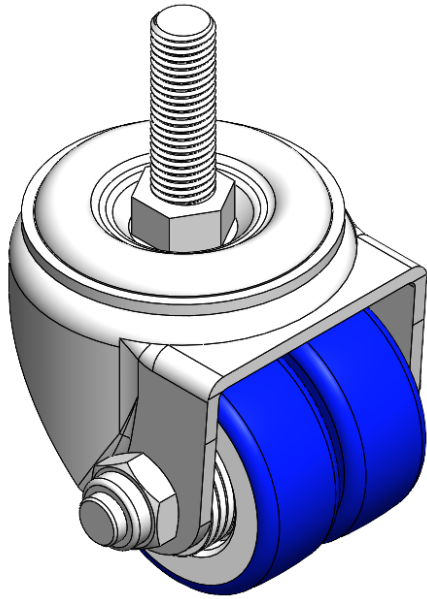
EAN

YJ-11090200805023

Swivel Caster with Riveted Stamping Fork—3/8"-16"  
Zine-Plated, Mounting Type - Threaded Stem  
Cast Iron core, High Quality Polyurethane Wheel Tread  
Blue color, Ball Bearings.

Wheel surface: high quality polyurethane  
Wheel Center: cast iron core

Drawings are for reference only and may differ from the product



Picture may differ from original product

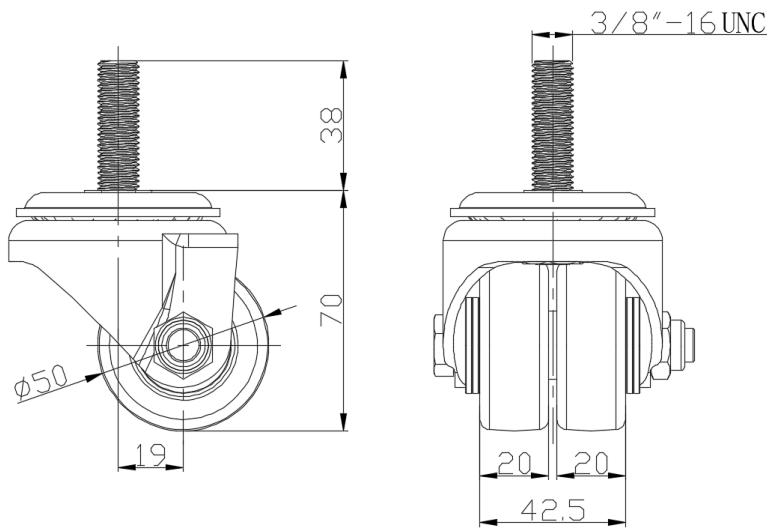
Technical Data

<input checked="" type="radio"/> Imperial <input type="radio"/> Metric	
Wheel Diameter	2 "
Wheel Width	1-11/16 "
Wheel Bearing	Wheels With Ball Bearings
Threaded Stem	3/8 " -16
Threaded Size	1-1/2 "
Offset	3/4 "
Swivel Interference	3-3/4 "
Overall Height	2-13/16 "
Swivel Radius	1-7/8 "
Hardness Of Tread	87±5° Shore A
Load Capacity (Dynamic)	220lbs
Load Capacity (Static)	331lbs
Temperature	-4°F to +158°F
Fork Type	Swivel Caster
Stainless	N/A
Electrical Conductivity	N/A
Anti-Static	N/A
Weight	2.1lbs
Standard	ISO22883

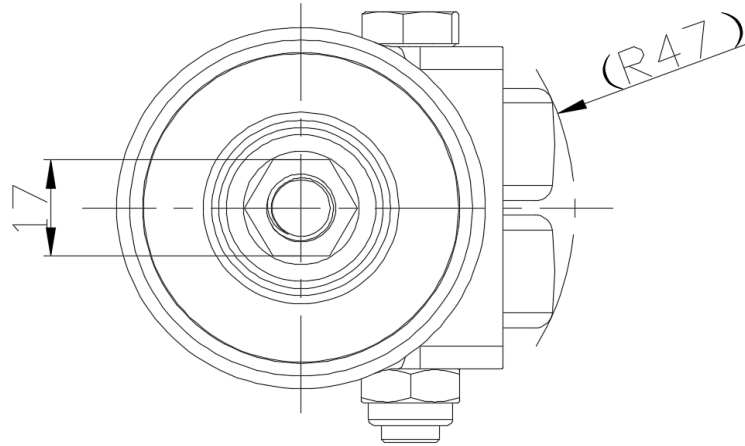
Advantages at a glance

Rolling Resistance	● ● ● ● ●
Operating Noise	● ● ● ● ●
Floor Surface Preservation	● ● ● ● ●

Dimensions



Mounting



\* For any deviation between metric and imperial spec, please refer to the metric spec.